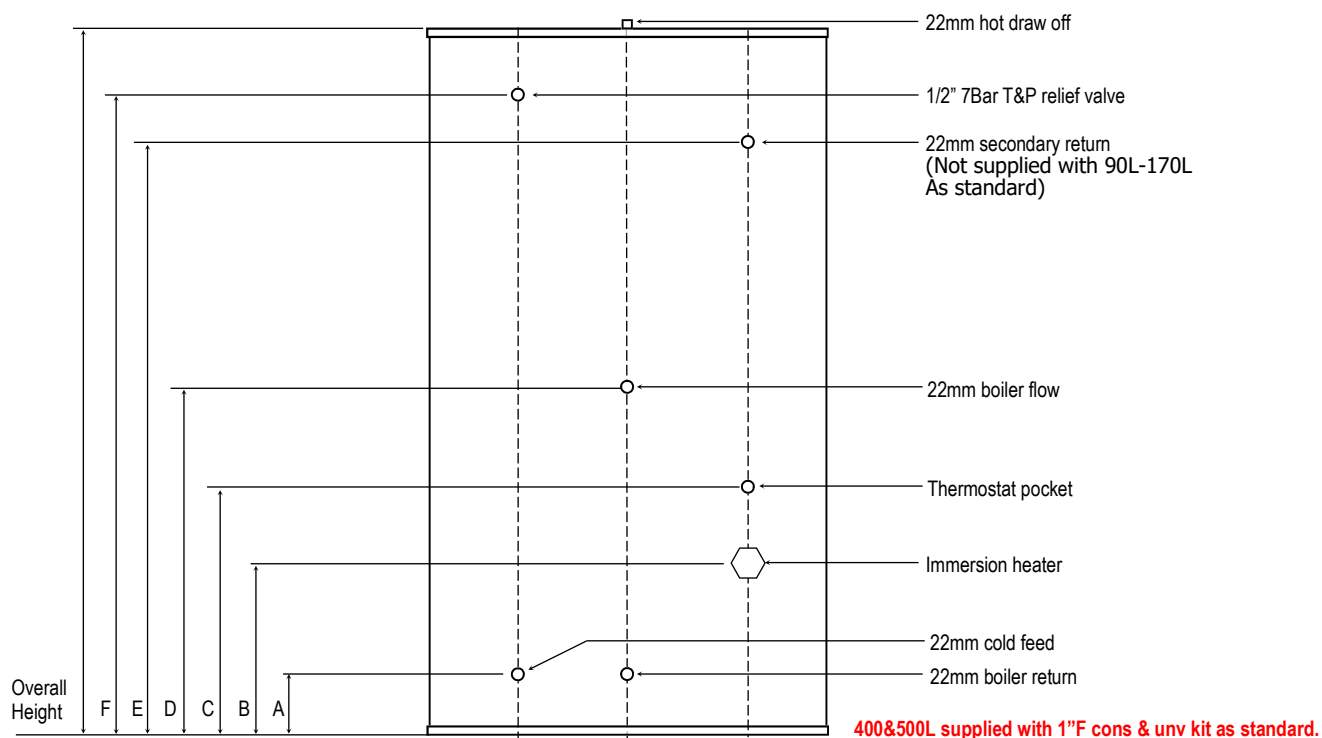


# Technical Data Sheet



## Tempest Indirect



All unvented cylinders come with an unvented component kit to suit. Dimensions are subject to change without any prior notice.

Product Code	TSMI090	TSMI125	TSMI150	TSMI170	TSMI200	TSMI250	TSMI300	TSMI400	TSMI500
Nominal Capacity (L)	90	125	150	170	200	250	300	400	500
Height (mm)	750	870	1060	1200	1150	1500	1750	1590	1835
Diameter Ø (mm)	510	510	510	510	580	580	580	660	660
A (mm)	171	171	171	171	193	193	193	236	236
B (mm)	201	201	201	201	223	223	223	266	266
C (mm)	401	401	401	451	473	553	553	596	786
D (mm)	497	497	497	601	623	843	843	886	1086
E (mm)	-	-	-	-	813	973	1253	1236	1386
F (mm)	551	671	876	1026	928	1293	1543	1336	1586
Empty Weight (kg)	32	35	38	42	46	55	61	68	75
Full Weight (kg)	121	156	187	210	240	301	355	459	560
Standing Heat Loss (kWh/24h)	1.59	1.64	1.85	1.97	1.85	2.00	2.22	2.42	2.49
Reheat time from 10°C to 60°C	26	36	37	36	33	35	40	45	50
Actual capacity (L)	89	121	149	168	194	246	294	391	485
Standing loss (W)	66	68	77	82	77	83	92	101	104
Energy efficiency class of model	C	C	C	C	C	C	C	C	C
Operating Pressure (bar)	3	3	3	3	3	3	3	3	3
Immersion Heater Rating	3kw 240v	3kw 240v	3kw 240v	3kw 240v	3kw 240v	3kw 240v	3kw 240v	3kw 240v	3kw 240v
Max incoming supply pressure (bar)	12	12	12	12	12	12	12	12	12



T: 01952 257961  
F: 01952 253452

E: sales@telford-group.com  
W: www.telford-group.com