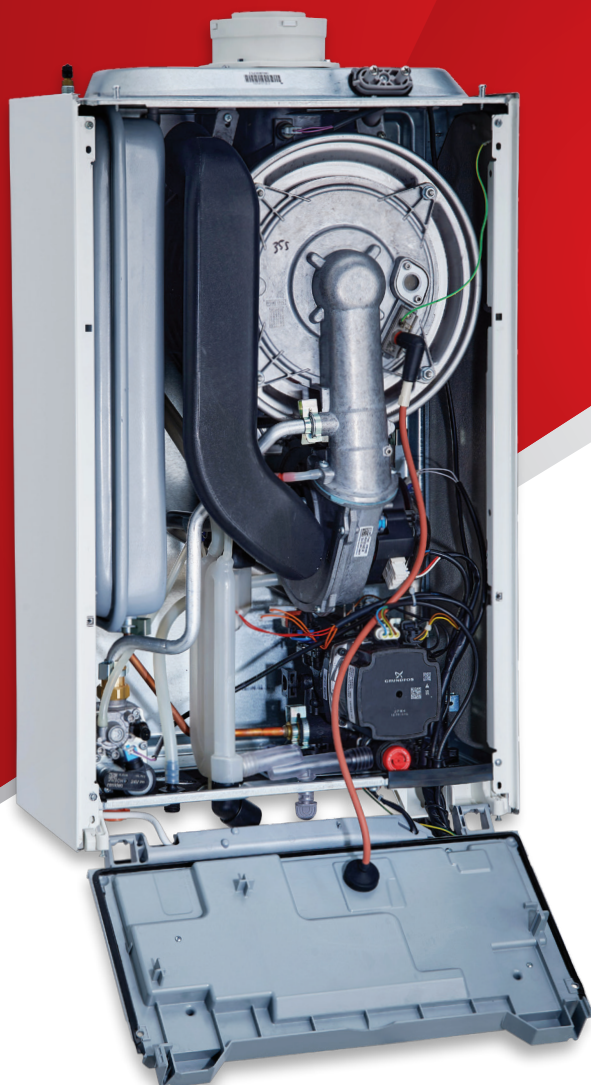


Alpha

# E-TEC NXS System boilers



**7 YEAR  
WARRANTY**

## KEY FEATURES:

- + Stainless steel heat exchanger moulded in thermoplastic to make the boiler lighter than previous models
- + Grundfos hydroblock assembly with Delta T variable speed operation pump
- + Adjustable heating flow temperature to allow increased efficiency
- + Range output customisable to the system requirements
- + Combined expansion relief with condensate drain
- + Weather compensation compatible with a simple external sensor connection
- + Open Therm and Alpha BUS control compatible
- + Removable push fit flue connection for quick installation of vertical or horizontal flue configurations

## BOILER SPECIFICATIONS

Model	Part number	CH output (kW)	Boiler dimensions H x W x D (mm)	Lift weight (kg)	Standard warranty	Modulation range	Max. horizontal flue length (m)	Max. vertical flue length (m)
E-Tec 20 NXS	3.033117	26.1	712 x 440 x 255	30.6	7 yr	1:6	12	14
E-Tec 30 NXS	3.033119	30.4	712 x 440 x 255	32.8	7 yr	1:6	12	14
E-Tec 35 NXS	3.033120	34.8	712 x 440 x 255	32.8	7 yr	1:6	12	14

LPG models available

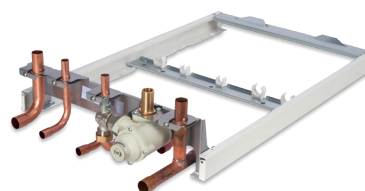
## ACCESSORIES

500mm EasyFlue	1000mm EasyFlue	Vertical flue	PMK (black)	Pipe cross-over	Weather comp.	Trace heating kit	Climatic RF*	Climatic Hard Wired*	Comfort 2 channel
6.2000510	6.2001010	6.2000520	6.2001300	3.028658	3.022383	6.5500050	3.022143	3.022144	3.022142

\*Alpha Diverter Valve Kit must be used.



## ACCESSORIES



PremierPack Pro  
Part Number: 3.028421

**+3 YEAR  
WARRANTY**



Cyclone Filter  
Part Number: 3.024172

**+1 YEAR  
WARRANTY**



Three-Way Diverter Valve Kit  
Part Number: 6.5500048

Must be fitted with Climatic Control.



Comfort 2-Channel Control  
Part Number: 3.022142