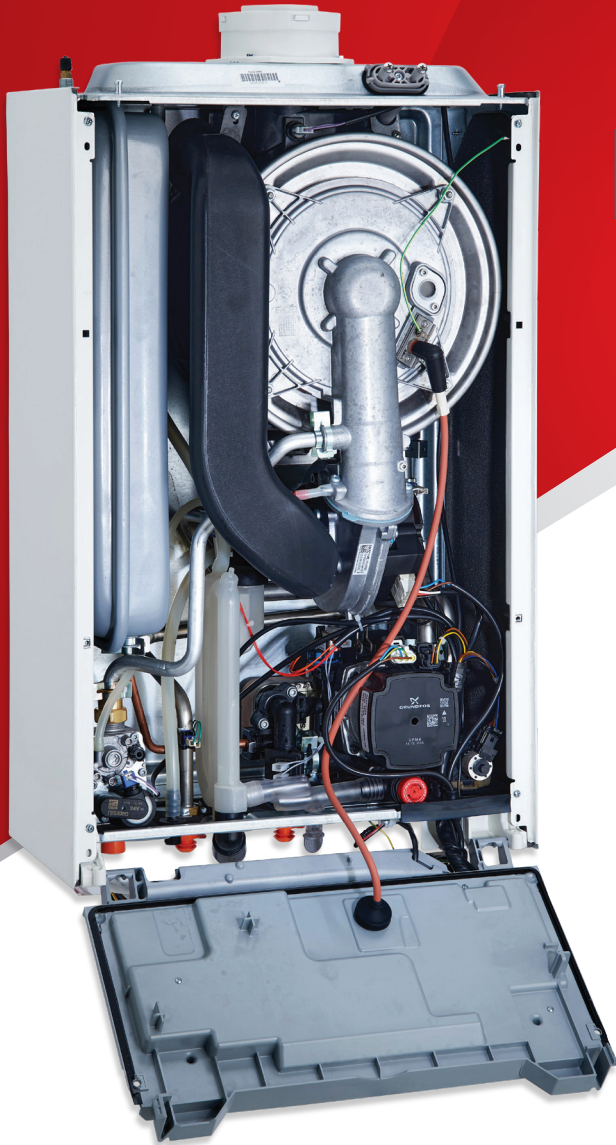


EVOKE NX



**7 YEAR
WARRANTY**

KEY FEATURES:

- + Stainless steel heat exchanger moulded in thermoplastic to make the boiler lighter than previous models
- + Grundfos hydroblock assembly with Delta T variable speed operation pump
- + Adjustable heating flow temperature to allow increased efficiency
- + Range output customisable to the system requirements
- + Combined expansion relief with condensate drain
- + Weather compensation compatible with a simple external sensor connection
- + Open Therm and Alpha BUS control compatible
- + Removable push fit flue connection for quick installation of vertical or horizontal flue configurations

BOILER SPECIFICATIONS

Model	Part number	DHW output (kW)	CH output (kW)	Flow rate @ 35°C rise l/min	Boiler dimensions H x W x D (mm)	Lift weight (kg)	Standard warranty	Modulation range	Max. horizontal flue length (m)	Max. vertical flue length (m)
Evoke 28 NX	3.033114	28.0	26.1	12.1	712 x 440 x 255	31.2	7yr	1:6	12	14
Evoke 33 NX	3.033115	32.0	30.4	14.1	712 x 440 x 255	33.4	7yr	1:6	12	14

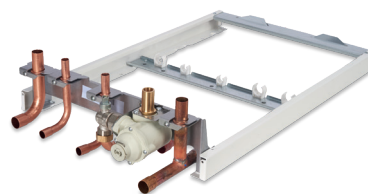
LPG models available

ACCESSORIES

750mm Cut down flue	500mm EasyFlue	1000mm EasyFlue	Vertical flue	PMK (black)	Weather comp.	Climatic RF	Climatic hard-wired	Digital EasyStat	Alpha Connect
3.023455	6.2000510	6.2001010	6.2000520	6.2001300	3.022383	3.022143	3.022144	7.2000050	7.2000155



ACCESSORIES



PremierPack Pro
Part Number: 3.028421

**+2 YEAR
WARRANTY**



Cyclone Filter
Part Number: 3.024172

**+1 YEAR
WARRANTY**



Pipe Crossover Kit
Part Number: 3.032945



Condensate Pump
Part Number: 3.026374