

TWVPro

TWIN WALL INSULATED CHIMNEY



Sales: 01843-842727

www.snh.co.uk E-mail: sales@snhuk.co.uk

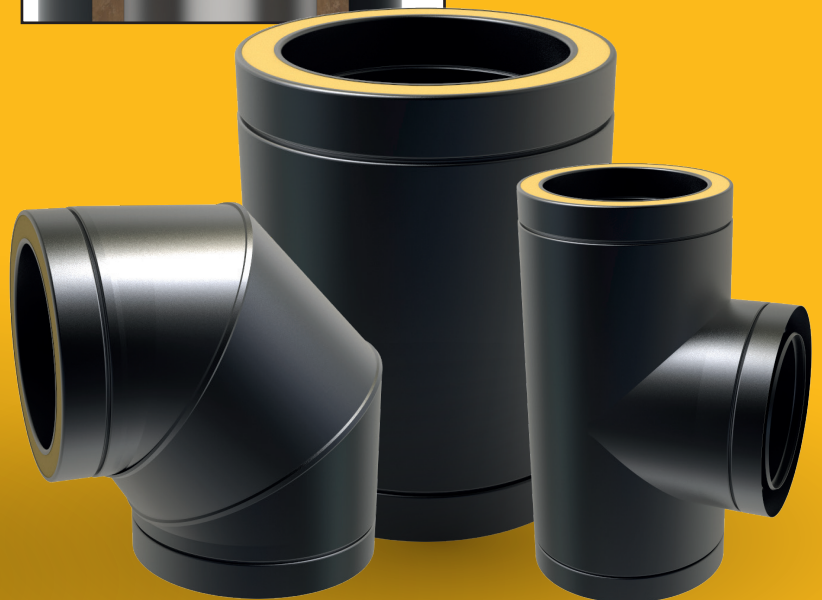
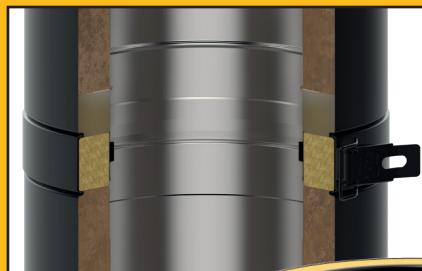
TWPro FitSystem®

This system was created exclusively for TWPro and makes installing chimneys quick and easy!

Super easy assembly. It takes one second and one hand to put two parts together including attaching the locking band!

The wall bands are embedded in to the pipe itself, so no protrusions between one section and the next.

Technical improvements in the insulation with G50 designation at 600°C, is the best available.



KEY BENEFITS

TWPro is a high quality, multi-fuel, stainless steel twin wall chimney system designed for use with all solid fuel, wood, coal, gas, oil and pellet heating appliances. It is tested to a maximum operating temperature of 600°C and comes with a 25 year warranty.

TWPro has exceptional thermal properties which have allowed it to be classified as G50. The 50mm clearance required to combustible materials also applies when it is installed in an enclosure. Enclosed or exposed, always G50 !

The 25mm high density mineral insulation is injected into the cavity of the chimney under high pressure; this improves the thermal efficiency of the system which in turn helps maintain constant and reliable flue performance.

The TWPro range has the largest selection of starting components of any chimney system available in the U.K. This enables you to complete the installation with the most aesthetically pleasing transition from stove to chimney possible.



Whilst TWPro is available off the shelf in an unrivalled selection of Blacks, Stainless Steel and Grey, it can also be powder coated to virtually any RAL colour of your choice. All powder coated finishes are U.V. resistant and therefore perfectly suited to external applications.

Locking bands are included with each component as required; the standard locking band will provide lateral support for up to 1.9 metres of pipe above the final wall support. Structural locking bands are available and allow an additional metre height.

TWPro is suitable for installation on both dry and condensing appliance applications. (Silicone seals are required for condensing appliances).

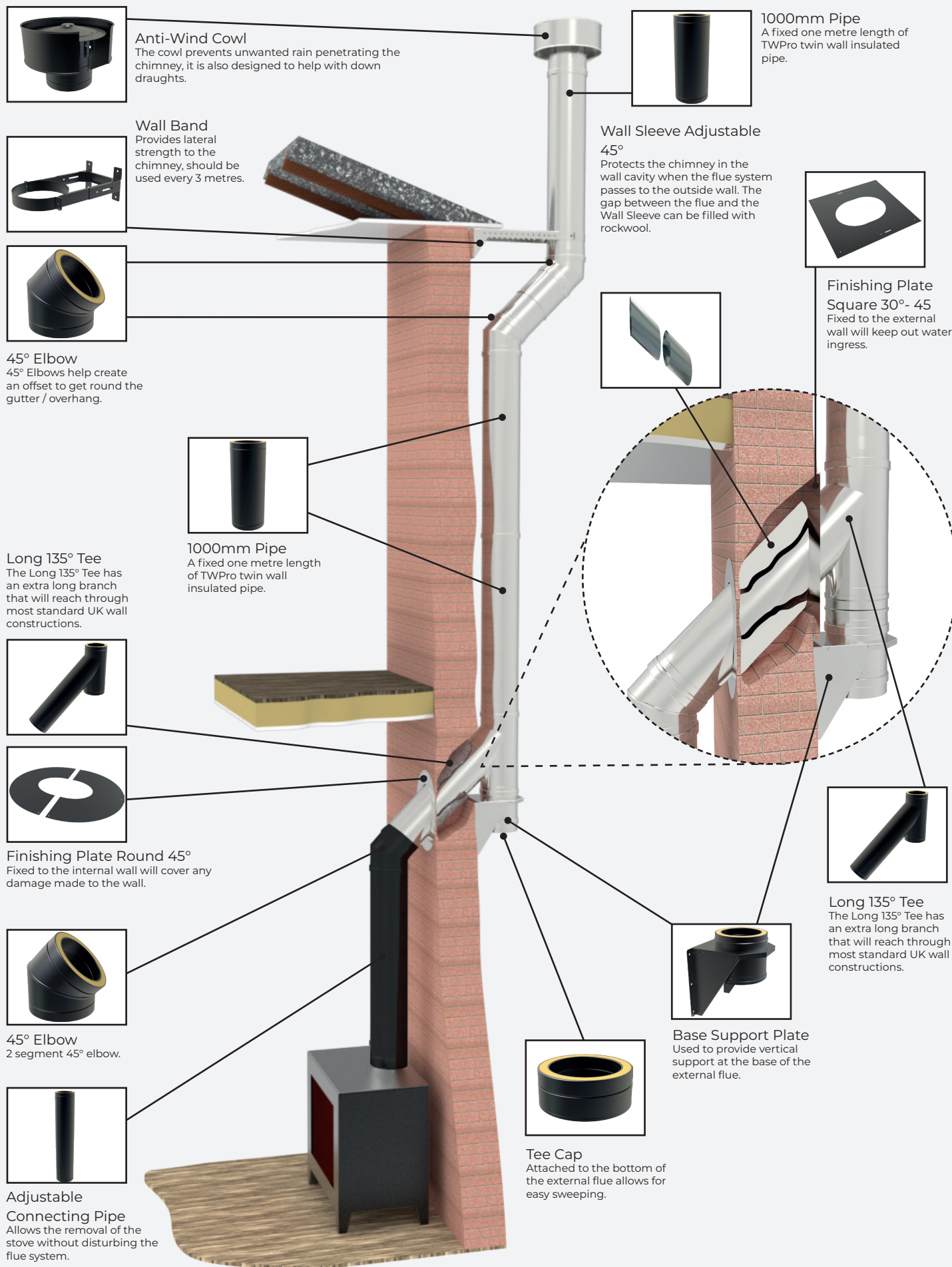


INSTALLATION & DESIGN CONSIDERATIONS WHEN DESIGNING THE FLUE SYSTEM

- ▶ The internal diameter of the flue system should not be less than the size specified by the appliance manufacturer.
- ▶ Ensure that the flue pipe connection from the appliance rises vertically for at least 600mm before any change of direction is contemplated.
- ▶ The minimum height for any solid fuel flue system is recommended to be 4.5m from the top of the appliance.
- ▶ The roof terminal position conforms to requirements defined by Document J of the Building Regulations.
- ▶ If the flue system extends more than 1.9m above the last support, structural locking bands or a roof bracing kit should be used.
- ▶ No more than ONE offset in the chimney (not including the connection to the appliance). The length of the chimney between the elbows MUST NOT exceed 20% of the total vertical length of the chimney.
- ▶ When providing a factory made metal chimney provision should be made to withdraw the appliance without the need to dismantle the chimney.
- ▶ No joint should occur within any floor, ceiling or wall space.
- ▶ The connection to the twin wall system should be in the same room as the appliance.
- ▶ The system should be fully supported along its full length.
- ▶ Provision should be made to inspect and clean the flue.
- ▶ When installing a TWPro chimney system ensure that the minimum clearance to combustible materials (50mm) is maintained. In attic or loft spaces use a mesh shield to prevent any unintended contact with combustible materials. No additional insulation materials should be placed around the flue pipe.

FUEL TYPE	Gas, oil & approved solid fuels
DIAMETER RANGE	100mm, 125mm, 150mm, 175mm, 200mm, 250mm
INNER CASING MATERIAL	0.4mm 316L Grade Stainless Steel
OUTER CASING MATERIAL	0.4mm 304 Grade Stainless Steel - Powder Coated
INSULATION TYPE	25mm injected mineral wool, 190Kg/m ³
JOINT METHOD	Push fit and locking band - FitSystem®
DESIGNATIONS	EN1856-1 T600 N1 W V2 L50040 G50 EN1856-1 T200 P1 W V2 L50040 O20
HETAS APPROVED	Yes
CE APPROVED	Yes
MAX OPERATING TEMPERATURE	600°C
WARRANTY	25 year conditional warranty on product. 2 years on paint finish

INSTALLATIONS HOUSE EXTERNAL

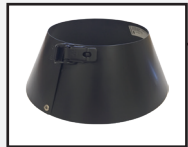


HOUSE INTERNAL INSTALLATIONS



Anti-Wind Cowl

The cowl prevents unwanted rain penetrating the chimney, it is also designed to help with down draughts.



Storm Collar

Used to ensure water tightness when passing through the roof. It protects the flashing from extreme weather conditions and UV.



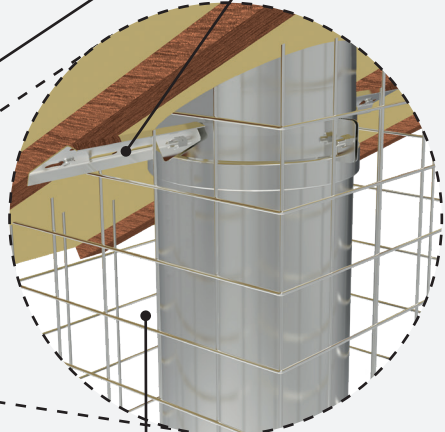
1000mm Pipe

A fixed one metre length of TWPro twin wall insulated pipe.



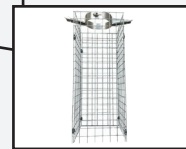
Roof Support

Attaches to the rafters in the roof space to help support the chimney.



1000mm Pipe

A fixed one metre length of TWPro twin wall insulated pipe.



Loft Mesh Kit

Building Control requirement means that the chimney must not be exposed in a usable loft space.



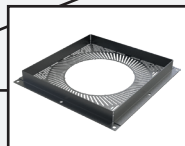
Joist Support

Used to support the chimney as it passes through the floor.



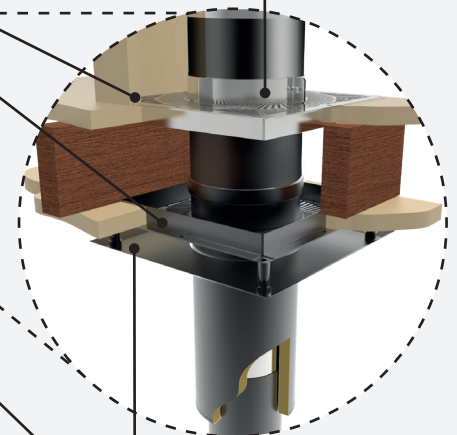
Connecting pipe starter length

A rebated slip joint at the bottom allows a connecting pipe to slide inside the main pipe allowing adjustment of up to 200mm. This allows pre installation of the chimney system and allows for safe disconnection of the appliance without disturbing the TWPro.

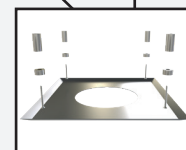


Ventilated Fire Stop Plate

Provides the correct distance to combustible materials when the chimney passes through a floor.



VIT Smooth
1000mm Pipe
Vitreous enamel
connecting pipe.



Fire Stop Cover Plate

Designed to cover the fire stop but still allows air to pass through.



INSTALLATIONS

FLEX RELINING WITH CHIMNEY BEING LOWERED



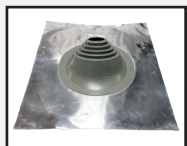
Anti-Wind Cowl
The cowl prevents unwanted rain penetrating the chimney, it is also designed to help with down draughts.



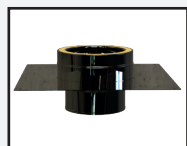
1000mm Pipe
A fixed one metre length of TWPro twin wall insulated pipe.



Storm Collar
Used to ensure water tightness when passing through the roof. It protects the flashing from extreme weather conditions and UV.



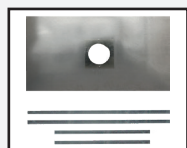
Residential Flashing
EPDM
Used to seal the roof where the flue has penetrated it.



Push Fit Chest Mounting Plate
Transitional plate that converts flexible flue liner to TWPro.



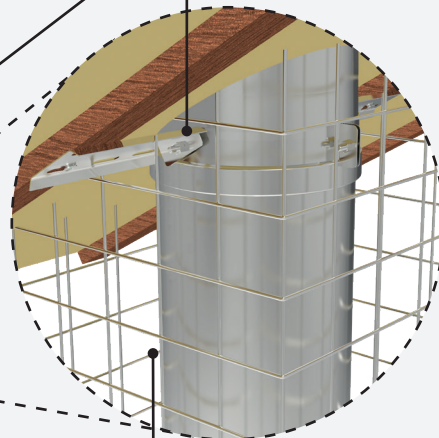
Mi-Flex Flue Liner
Stainless steel flexible flue liner used to reline an existing chimney.



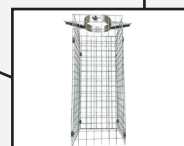
Register Plate
Used to seal off the base of the chimney opening.



Roof Support
Attaches to the rafters in the roof space to help support the chimney.



Loft Mesh Kit
Building Control requirement means that the chimney must not be exposed in a usable loft space.



1000mm Pipe
A fixed one metre length of TWPro twin wall insulated pipe.



Stove Pipe to Flex Adaptor
Used to convert from enamel pipe to flexible flue liner with a screwfix adaptor.



VIT Smooth 1000mm Pipe
Vitreous enamel connecting pipe.



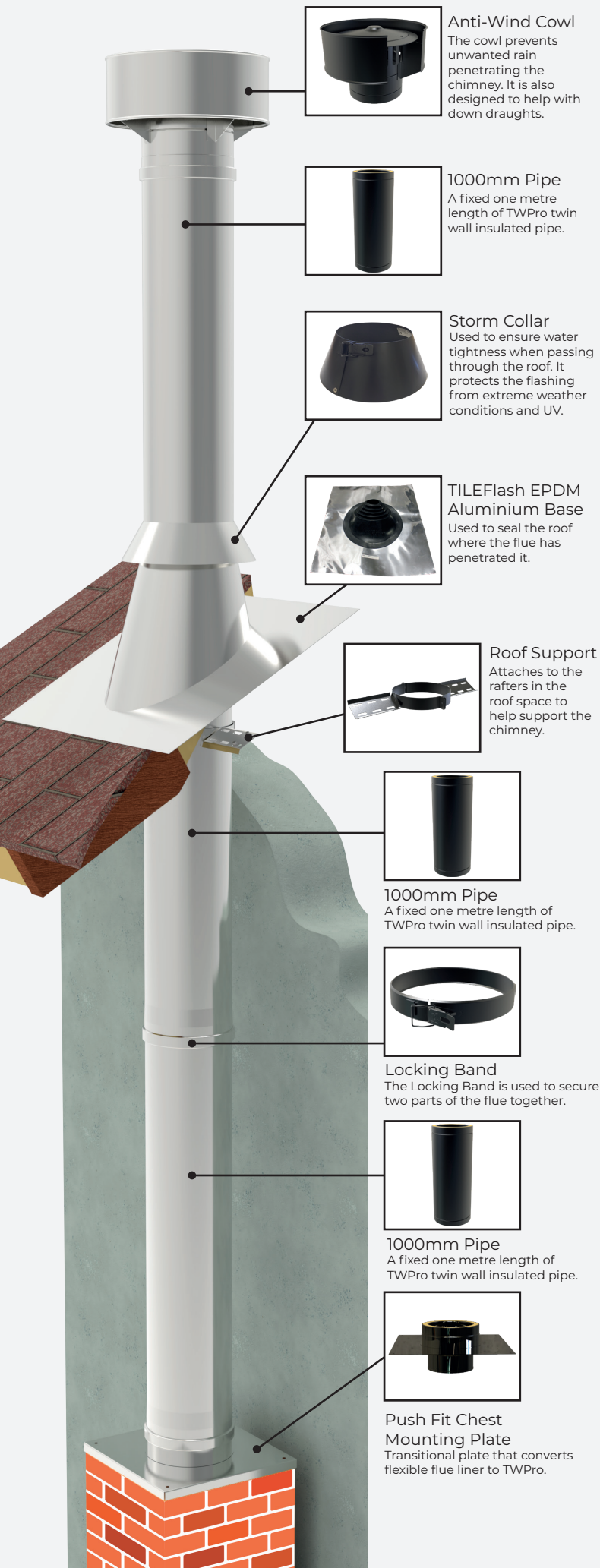
Product information and specifications.....	4 - 5
External and internal house installations	6 - 7



TWPRO TWIN WALL CHIMNEY SYSTEM

Starter Pipes.....	8
Straight Pipes.....	9
Adaptors.....	10 - 11
Elbows and Tees	12 - 14
Supports.....	15 - 18
Fire Stops.....	19
Flashings	20 - 22
Terminals	22 - 23
Finishing Plates.....	24 - 25
Accessories	26

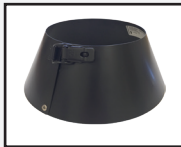
Load support technical information	27
--	----



Anti-Wind Cowl
The cowl prevents unwanted rain penetrating the chimney. It is also designed to help with down draughts.



1000mm Pipe
A fixed one metre length of TWPro twin wall insulated pipe.



Storm Collar
Used to ensure water tightness when passing through the roof. It protects the flashing from extreme weather conditions and UV.



TILEFlash EPDM Aluminium Base
Used to seal the roof where the flue has penetrated it.



Roof Support
Attaches to the rafters in the roof space to help support the chimney.



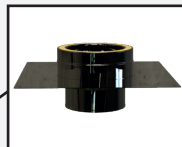
1000mm Pipe
A fixed one metre length of TWPro twin wall insulated pipe.



Locking Band
The Locking Band is used to secure two parts of the flue together.

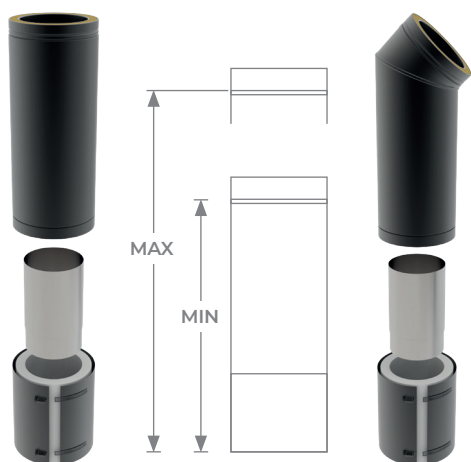


1000mm Pipe
A fixed one metre length of TWPro twin wall insulated pipe.



Push Fit Chest Mounting Plate
Transitional plate that converts flexible flue liner to TWPro.

STARTER PIPES



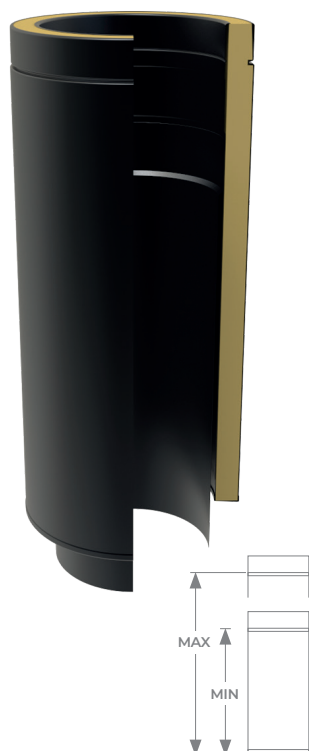
Adjustable connecting pipes

Available in 3 variables. An exposed telescopic connecting pipe built into the male end. This has a cover band and insulation to cover the connecting pipe. This can be used to connect directly on to a heating appliance and allows a clean streamlined finish to a stove installation. The disconnecter section allows for easy removal of the appliance.

Length	500mm	500mm with 45° bend	1000mm
Minimum length	470mm	450mm	970mm
Maximum length	605mm	575mm	1105mm
Ø125	BSG-125-026	BSG-125-027	BSG-125-025
Ø150	BSG-150-026	BSG-150-027	BSG-150-025

Step by step guide to installation:

1. Fit pipe to existing flue system with secure locking band.
2. Extend inner skin into the stove flue collar and seal with high temp sealant.
3. Cut insulating blanket to desired length.
4. Wrap insulating blanket around inner skin.
5. Fix outer skin with the 2 locking clamps at the rear of the pipe.
6. Finished result.



Connecting pipe starter length

Available in 2 lengths. A rebated slip joint at the bottom allows a connecting pipe to slide inside the main pipe allowing adjustment of up to 200mm. This allows pre installation of the chimney system and allows for safe disconnection of the appliance without disturbing the TWPro.

Length	500mm	1000mm
Ø80	BS-80-022	BS-80-021
Ø100	BS-100-022	BS-100-021
Ø125	BSG-125-022	BSG-125-021
Ø150	BSG-150-022	BSG-150-021
Ø175	BS-175-022	BS-175-021
Ø200	BS-200-022	BS-200-021

Step by step guide to installation:



Slide pipe into TWPro connecting starter length



Extend pipe into the stove spigot and seal with high temp sealant



Job done!

STRAIGHT PIPES

Product codes explained and how to order

To make sure you get the right product colour, we've come up with a system that lets you know which colours are available for each product within the TWPro range.

When ordering you will need to replace the colour code **B** (black - 37), **S** (stainless steel - 2), and **G** (grey - 17) with the corresponding number.

(B) Black = 37

(S) Stainless Steel = 2

(G) Grey = 17

EXAMPLE CODE: Grey 150mm diameter 250mm length pipe

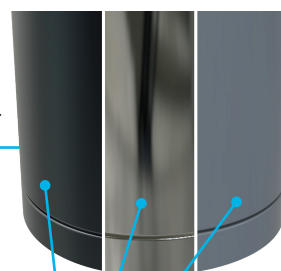
17-150-012

SKU:

BSG-125-010

DIAMETER (Ø)

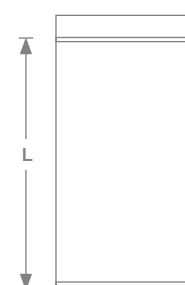
PRODUCT REF



Pipes

Available in 5 lengths. Includes integral locking band fitted to the bottom of each length for FastFit System. Outside diameter is 50mm greater than the inside diameter.

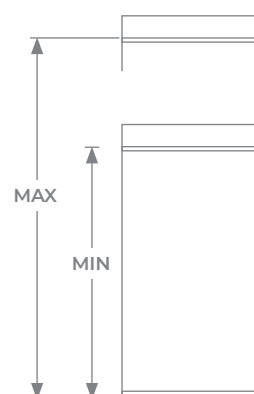
Nominal length	1000mm	800mm	500mm	250mm	100mm
Effective length (L)	965mm	765mm	465mm	215mm	65mm
Ø80	BS-80-010		BS-80-011	BS-80-012	BS-80-018
Ø100	BS-100-010		BS-100-011	BS-100-012	BS-100-018
Ø125	BSG-125-010	B-125-024	BSG-125-011	BSG-125-012	BSG-125-018
Ø150	BSG-150-010	B-150-024	BSG-150-011	BSG-150-012	BSG-150-018
Ø175	BS-175-010		BS-175-011	BS-175-012	BS-175-018
Ø200	BS-200-010		BS-200-011	BS-200-012	BS-200-018
Ø250	S-250-010		S-250-011	S-250-012	S-250-018



Adjustable pipes

Available in 4 lengths. Supplied with a body soluble ceramic blanket that is cut down to achieve the desired effective length. Includes integral locking band fitted to the bottom of each length for FastFit System. Outside diameter is 50mm greater than the inside diameter.

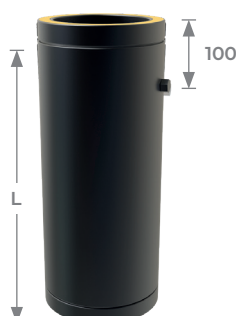
Maximum length	1300mm	820mm	500mm	350mm
Minimum length	800mm	550mm	350mm	250mm
Ø80		BS-80-014	BS-80-015	BS-80-016
Ø100		BS-100-014	BS-100-015	BS-100-016
Ø125	BSG-125-017	BSG-125-014	BSG-125-015	BSG-125-016
Ø150	BSG-150-017	BSG-150-014	BSG-150-015	BSG-150-016
Ø175		BS-175-014	BS-175-015	BS-175-016
Ø200		BS-200-014	BS-200-015	BS-200-016
Ø250		BS-250-014	BS-250-015	BS-250-016



Testing length

A test point and cap are built in to the pipe. This allows safe entry point into the flue way for testing gas and draft samples.

Nominal length	500mm
Effective length (L)	465mm
Ø80	S-80-019
Ø100	S-100-019
Ø125	BS-125-019
Ø150	BS-150-019
Ø175	S-175-019
Ø200	S-200-019
Ø250	S-250-019



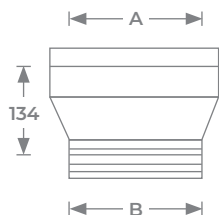
Pipe 500mm door

Sweeping access built into a 500mm pipe. The pipe has an inner and outer door, allowing easy sweeping access using locking clamps. Includes integral locking band fitted to the bottom of each length for FastFit System. Outside diameter is 50mm greater than the inside diameter.

Nominal length	500mm
Effective length (L)	465mm
Ø80	
Ø100	
Ø125	B-125-023
Ø150	B-150-023
Ø175	
Ø200	
Ø250	



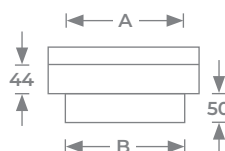
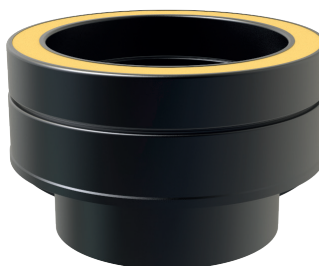
ADAPTORS



Single wall to twin wall adaptor

Universal adaptor to connect the appliance outlet to the TWPro. Can also connect single wall connecting flue or vitreous enamel to TWPro. This has a tapered design to allow a smooth transition from single wall to twin wall.

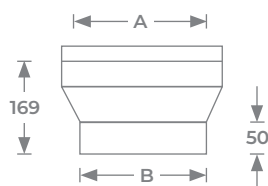
Diameters		
A	B	
Ø80	Ø78	S-80-001
Ø100	Ø98	BS-100-001
Ø125	Ø123	BS-125-001
Ø150	Ø148	BS-150-001
Ø175	Ø173	BS-175-001
Ø200	Ø198	BS-200-001
Ø250	Ø248	BS-250-001



Flat adaptor to single wall

Universal adaptor to connect the appliance outlet to the TWPro, can also connect single wall connecting flue or vitreous enamel to TWPro. This has a flat design to give an instant transition from the appliance or connecting flue to TWPro in the shortest length.

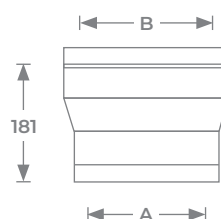
Diameters		
A	B	
Ø80	Ø78	S-80-005
Ø100	Ø98	BS-100-005
Ø125	Ø123	BSG-125-005
Ø150	Ø148	BSG-150-005
Ø175	Ø173	BS-175-005
Ø200	Ø198	BS-200-005
Ø250	Ø248	



Single wall to twin wall increaser

Universal adaptor used as a increasing adaptor to connect the appliance outlet to the TWPro, can also connect single wall connecting flue or vitreous enamel to TWPro. This has a tapered design to allow a smooth transition from single wall to twin wall.

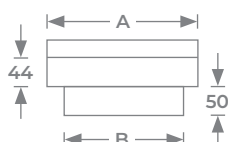
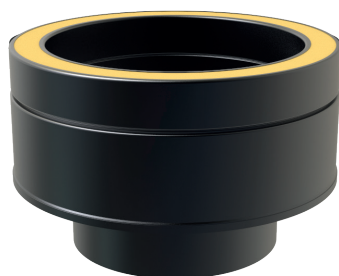
Diameters		
A	B	
Ø80		S-80-002
Ø100	Ø78	BS-100-002
Ø125	Ø98	BSG-125-002
Ø150	Ø123	BSG-150-002
Ø175	Ø148	BS-175-002
Ø200	Ø173	BS-200-002
Ø250	Ø198	BS-250-002



Twin wall to twin wall increaser

Increasing adaptor from TWPro to TWPro. Increasing in 25mm increments.

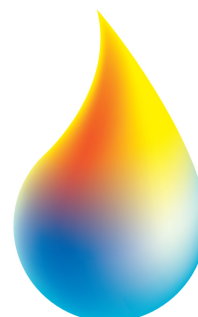
Diameters		
A	B	
Ø80	Ø100	BS-80-004
Ø100	Ø125	BS-100-004
Ø125	Ø150	BSG-125-004
Ø150	Ø175	BSG-150-004
Ø175	Ø200	BS-175-004
Ø200	Ø225	BS-200-004
Ø250	Ø300	BS-250-004



Flat increasing adaptor

Universal adaptor to connect the appliance outlet to the TWPro, can also connect single wall connecting flue or vitreous enamel to TWPro. This has a tapered design to allow a smooth transition from single wall to twin wall.

Diameters		
A	B	
Ø80	Ø78	
Ø125	Ø98	B-100-009
Ø150	Ø123	BSG-125-009



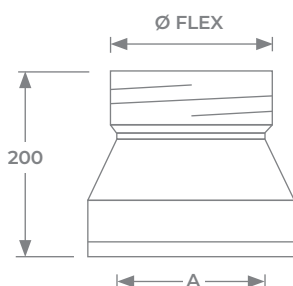
snh

Twin wall to flex adaptor

Transitional adaptor from TWPro to MI-Flues multi fuel liner. The adaptor has a screw fix coupling that screw onto the flexible flue liner. This transition must be made inside an existing class 1 Chimney. (no flex should be visible outside the brick or clay chimney.)



Diameters		
FLEX Ø	A	
Ø80	Ø80	BS-80-099
Ø100	Ø100	BS-100-099
Ø125	Ø125	BS-125-099
Ø150	Ø150	BS-150-099
Ø175	Ø175	BS-175-099
Ø200	Ø200	BS-200-099
Ø250	Ø250	BS-250-099

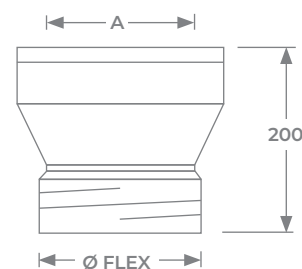


Flex to twin wall adaptor

Transitional adaptor from MI-Flues multi fuel liner to TWPro. The adaptor has a screw fix coupling that screw onto the flexible flue liner. This transition must be made inside an existing class 1 Chimney. (no flex should be visible outside the brick or clay chimney.)



Diameters		
FLEX Ø	A	
Ø80	Ø80	BS-80-101
Ø100	Ø100	BS-100-101
Ø125	Ø125	BS-125-101
Ø150	Ø150	BS-150-101
Ø175	Ø175	BS-175-101
Ø200	Ø200	BS-200-101
Ø250	Ø250	BS-250-101



TWPro to KC special locking band

The TWPro to KC transitional locking band is used when connecting into existing KC. TWPro at the bottom KC at the top. *Please note:* if a transitional band is used the whole system becomes 60mm to combustible materials.

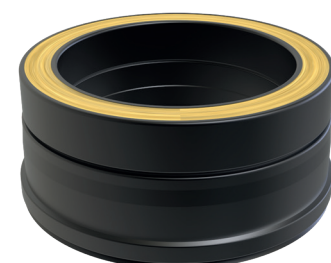
Ø80	
Ø100	
Ø125	BS-125-150
Ø150	BS-150-150
Ø175	
Ø200	
Ø250	



Special adaptor TWPro to KC

The KC to TWPro transitional adaptor is used when connecting onto existing KC. KC at the bottom TWPro at the top. *Please note:* if a transitional adaptor is used the whole system becomes 60 mm to combustible materials.

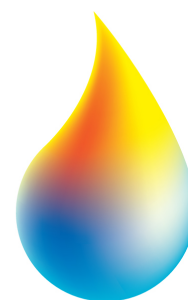
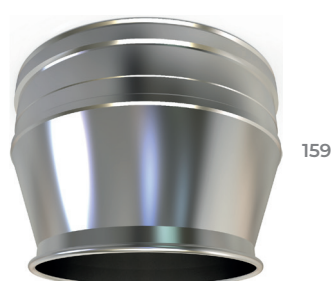
Ø80	
Ø100	
Ø125	BS-125-151
Ø150	BS-150-151
Ø175	
Ø200	
Ø250	



Boiler adaptor (tapered)

Starting adaptor that fits over the outside of the boiler outlet.

Length	145mm
Ø80	S-80-003
Ø100	S-100-003
Ø125	S-125-003
Ø150	S-150-003
Ø175	S-175-003
Ø200	S-200-003
Ø250	S-250-003



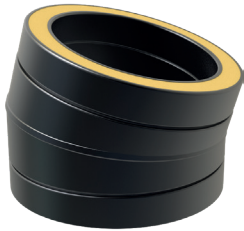
snh

ELBOWS AND TEES

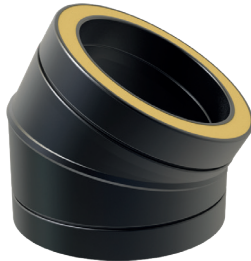
15°, 30° and 45° bend

2 segment bend. Outside diameter is 50mm greater than the inside diameter.

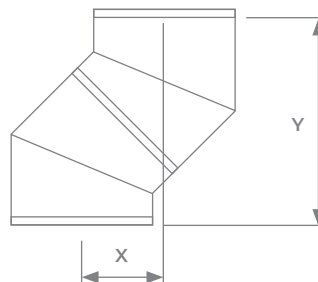
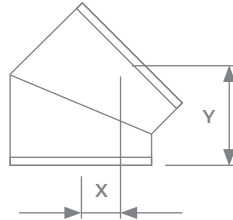
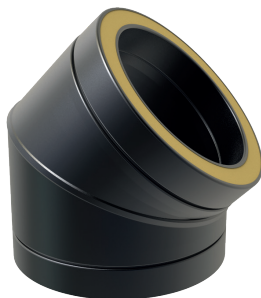
15° angle



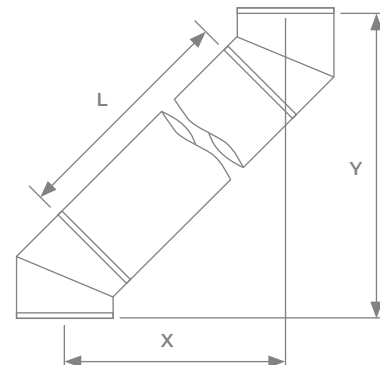
30° angle



45° angle



No Length



Angle	45° Elbow			30° Elbow			15° Elbow		
	BM-Ø-031			BM-Ø-032			BM-Ø-033		
	X	Y		X	Y		X	Y	
Ø80	47	130	BS-80-031	29	122	BS-80-032	15	120	BS-80-033
Ø100	50	137	BS-100-031	30	127	BS-100-032	16	123	BS-100-033
Ø125	54	146	BSG-125-031	32	134	BSG-125-032	16	125	BSG-125-033
Ø150	58	154	BSG-150-031	33	140	BSG-150-032	16	129	BSG-150-033
Ø175	61	163	BS-175-031	34	141	BS-175-032	17	132	BS-175-033
Ø200	65	172	BS-200-031	37	152	BS-200-032	17	136	BS-200-033
Ø250	72	190	BS-250-031	40	165	BS-250-032	18	142	BS-250-033
Ø300	65	172	BS-300-031	37	152	BS-300-032	17	136	BS-300-033

		Ø80 / 130		Ø100 / 150		Ø125 / 175		Ø150 / 200		Ø175 / 225		Ø200 / 250		Ø250 / 300		Ø300 / 350	
Pipe Length (L)		X	Y	X	Y	X	Y	X	Y	X	Y	X	Y	X	Y	X	Y
45°	No length	96.4	233	102	247	110	264	117	283	125	301	131	317	146	353	161	389
	250mm	248	385	254	399	262	416	269	435	277	453	283	469	298	505	313	541
	500mm	425	562	431	576	438	593	446	611	453	630	460	645	475	682	490	717
	1m	779	915	785	929	792	947	799	965	807	1122	813	999	829	1035	646	1071
30°	No length	61	229	64	240	67	251	71	266	74	278	78	289	85	316	91	340
	250mm	169	416	172	426	175	438	179	452	182	464	185	476	192	502	198	526
	500mm	294	632	297	642	300	654	304	668	307	680	310	692	317	718	323	742
	1m	544	1065	547	1076	550	1087	554	1101	557	1113	560	1125	567	1151	573	1175
15°	No length	29	233	30	227	31	233	32	242	33	247	33	253	35	267	37	279
	250mm	85	431	86	435	86	441	87	449	88	455	89	461	91	475	92	487
	500mm	150	672	150	677	151	683	152	691	153	697	154	702	156	716	157	729
	1m	279	1155	280	1160	280	1165	282	1174	282	1180	283	1185	285	1199	287	1211

90° and 87° bend

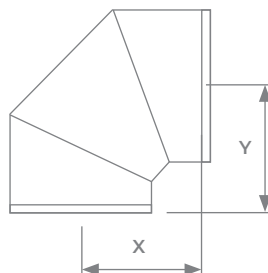
3 segment 90° and 87 bend. Outside diameter is 50mm greater than the inside diameter.



90° angle



87° angle



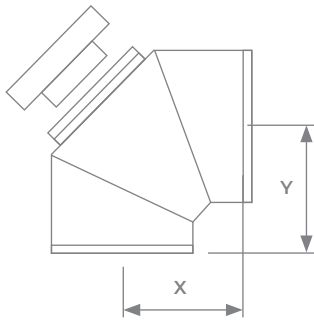
Angle	90° Bend			87° Bend		
	X	Y		X	Y	
Ø80	113	131	BS-80-030	109	133	BS-80-038
Ø100	123	141	BS-100-030	119	143	BS-100-038
Ø125	136	154	BS-125-030	130	155	BS-125-038
Ø150	148	166	BS-150-030	142	168	BS-150-038
Ø175	161	179	BS-175-030	154	180	BS-175-038
Ø200	173	191	BS-200-030	166	193	BS-200-038
Ø250	198	216	BS-250-030	190	218	BS-250-038

ELBOWS AND TEES

90° inspection bend

90° bend with a fully condensing P1 access plug (with seals), this allows full inspection on 90° changes of direction allowing sweeping in 2 directions.

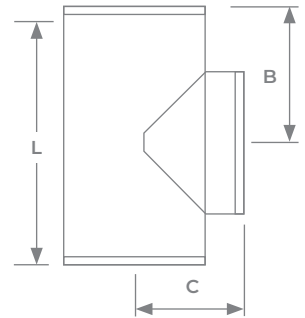
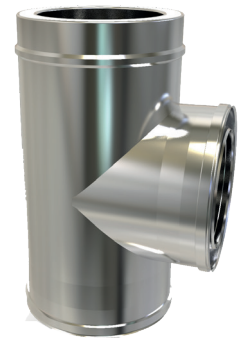
	X	Y	
Ø80			
Ø100	168	177	
Ø125	183	192	S-125-042
Ø150	199	208	S-150-042
Ø175	214	223	S-175-042
Ø200	230	239	S-200-042
Ø250	261	270	S-250-042



90° reducing tee

Used when creating cascade header systems when it is required to join multiple boilers. The branch diameter is available in multiple sizes.

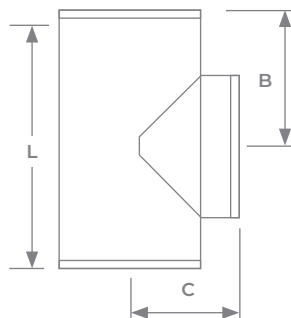
	L	B	C	
Ø80				
Ø100	322	157	145	S-100-040
Ø125	347	170	158	S-125-040
Ø150	372	182	170	S-150-040
Ø175	460	227	183	S-175-040
Ø200	460	222	195	S-200-040
Ø250	487	237	220	S-250-040



90° tee

The 90° Tee is usually installed when you are connecting the flue to the rear outlet of an appliance.

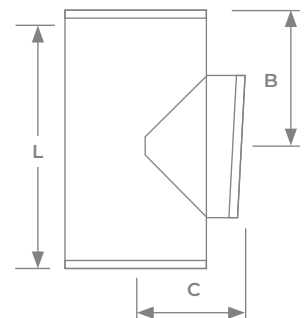
	L	B	C	
Ø80	293	143	135	BS-80-035
Ø100	322	157	145	BS-100-035
Ø125	347	170	158	BSG-125-035
Ø150	372	182	170	BSG-150-035
Ø175	460	227	183	BS-175-035
Ø200	460	222	195	BS-200-035
Ø250	487	237	220	BS-250-035



93° tee

The 93° Tee is usually installed in conjunction with a fully condensing boiler to allow a 3° fall back to the boiler or condense collector to remove water created in the flue way.

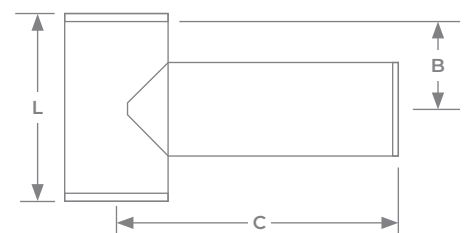
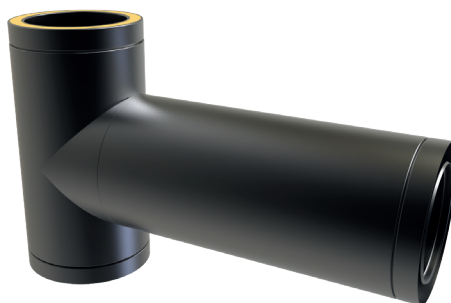
	L	B	C	
Ø80	293	146	135	BS-80-039
Ø100	322	160	145	BS-100-039
Ø125	347	172	158	BS-125-039
Ø150	372	185	170	BS-150-039
Ø175	460	229	183	BS-175-039
Ø200	460	225	195	BS-200-039
Ø250	487	240	220	BS-250-039



90° long tee

The 90° Tee is usually installed when you are connecting the flue to the rear outlet of an appliance. This tee has a 450mm branch that allows the tee to be installed directly onto the back of a wood burning stove passing through a standard brick wall.

	L	B	C	
Ø80				
Ø100				
Ø125	326	152	488	BS-125-045
Ø150	351	165	500	BS-150-045
Ø175				
Ø200				
Ø250				

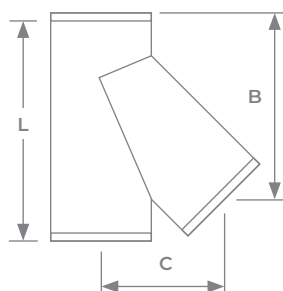


ELBOWS AND TEES



135° tee

The 135° Tee is used when you need a cleaning access at the base of the chimney. It is the first piece installed on the external wall and allows for easy cleaning of the flue. The 135° Tee is shaped in such a way that it does not restrict the flue gases.

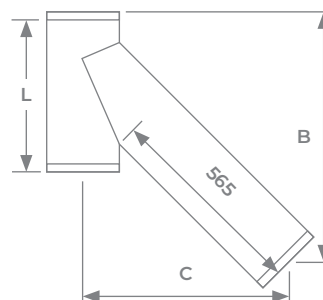


	L	B	C	
Ø80	320	258	175	BS-80-034
Ø100	348	279	305	BS-100-034
Ø125	383	305	213	BSG-125-034
Ø150	419	332	234	BSG-150-034
Ø175	454	358	256	BS-175-034
Ø200	490	385	277	BS-200-034
Ø250	560	438	320	BS-250-034



Long 135° tee

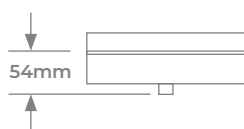
The Long 135° Tee is used when you need a cleaning access at the base of the chimney. It is the first piece installed on the external wall and allows for easy cleaning of the flue. The 135° Tee is shaped in such a way that it does not restrict the flue gases, it has a extra-long branch that will reach through most standard UK wall constructions.



	L	B	C	
Ø80				
Ø100				
Ø125	383	642	549	BSG-125-044
Ø150	419	668	571	BSG-150-044
Ø175	454	695	592	BS-175-044
Ø200	490	721	613	BS-200-044
Ø250				

Tee cap with drain

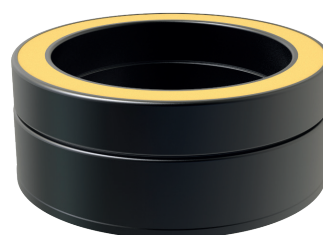
Used to cap off the bottom or unused end of a 90/135 tee. This is usually fitted to the bottom of a base support to allow easy removal for sweeping and access. This part includes a 10mm threaded drain to allow the connection of a drain pipe to carry away excess condensate from the flue system.



Ø80	
Ø100	BS-100-037
Ø125	BS-125-037
Ø150	BS-150-037
Ø175	BS-175-037
Ø200	BS-200-037
Ø250	BS-250-037

Tee cap

Used to cap off the bottom or unused end of a 90/135 tee. This is usually fitted to the bottom of a base support to allow easy removal for sweeping and access.



Ø80	BS-80-036
Ø100	BS-100-036
Ø125	BSG-125-036
Ø150	BSG-150-036
Ø175	BS-175-036
Ø200	BS-200-036
Ø250	BS-250-036

Locking band

The locking band is used to secure two parts of the flue together. A locking band is required at every joint.

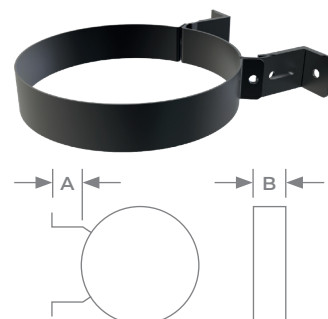
Ø80	
Ø100	BS-100-050
Ø125	BSG-125-050
Ø150	BSG-150-050
Ø175	BS-175-050
Ø200	BS-200-050
Ø250	



Wall band 50-80mm

Wall supports are to be used for lateral support only and should be used a minimum of every 3 metres. Only recommended fixings should be used to fit the wall support to the building surface. This wall band allows you to set a distance of 50mm (minimum) and 80mm (maximum) adjustment from the wall surface allowing a 30mm adjustment.

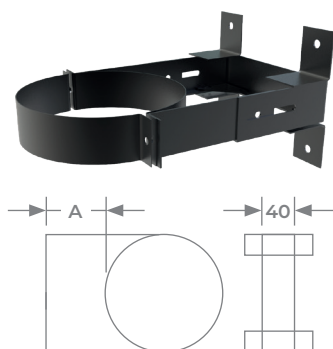
	A min	A max	B	
Ø80	50	80	30	BS-80-051
Ø100	50	80	30	BS-100-051
Ø125	50	80	30	BSG-125-051
Ø150	50	80	30	BSG-150-051
Ø175	50	80	40	BS-175-051
Ø200	50	80	40	BS-200-051
Ø250	50	80	40	BS-250-051



Wall band 80-130mm

Wall supports are to be used for lateral support only and should be used a minimum of every 3 metres. Only recommended fixings should be used to fit the wall support to the building surface. This wall band allows you to set a distance of 80mm (minimum) and 130mm (maximum) adjustment from the wall surface allowing a 50mm adjustment.

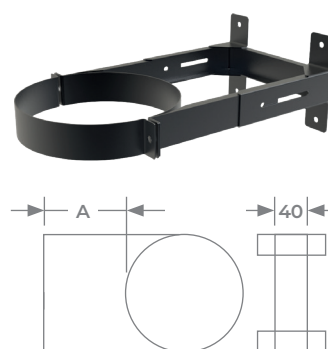
	A min	A max	
Ø80	80	130	BS-80-052
Ø100	80	130	BS-100-052
Ø125	80	130	BSG-125-052
Ø150	80	130	BSG-150-052
Ø175	80	130	BS-175-052
Ø200	80	130	BS-200-052
Ø250	80	130	BS-250-052



Wall band 130-210mm

Wall supports are to be used for lateral support only and should be used a minimum of every 3 metres. Only recommended fixings should be used to fit the wall support to the building surface. This wall band allows you to set a distance of 130mm (minimum) and 210mm (maximum) adjustment from the wall surface allowing a 110mm adjustment.

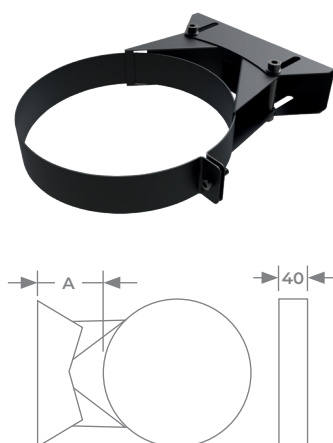
	A min	A max	
Ø80	130	210	BS-80-053
Ø100	130	210	BS-100-053
Ø125	130	210	BSG-125-053
Ø150	130	210	BSG-150-053
Ø175	130	210	BS-175-053
Ø200	130	210	BS-200-053
Ø250	130	210	BS-250-053



Premium wall bracket 50-90mm

Premium wall brackets are to be used for lateral support only and should be used a minimum of every 3 metres. Only recommended fixings should be used to fit the wall support to the building surface. This wall band allows you to set a distance of 50mm (minimum) and 90mm (maximum) adjustment from the wall surface allowing a 40mm adjustment. This bracket will also allow a small amount of lateral movement left to right.

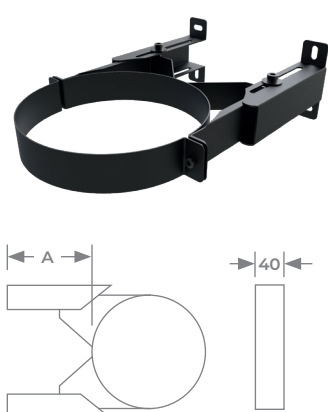
	A min	A max	
Ø80	50	90	BS-80-151
Ø100	50	90	BS-100-151
Ø125	50	90	BSG-125-151
Ø150	50	90	BSG-150-151
Ø175	50	90	BS-175-151
Ø200	50	90	BS-200-151
Ø250	50	90	BS-250-151



Premium wall bracket long 100-210mm

Premium wall brackets are to be used for lateral support only and should be used a minimum of every 3 metres. Only recommended fixings should be used to fit the wall support to the building surface. This wall band allows you to set a distance of 90mm (minimum) and 210mm (maximum) adjustment from the wall surface allowing a 40mm adjustment. This bracket will also allow a small amount of lateral movement left to right.

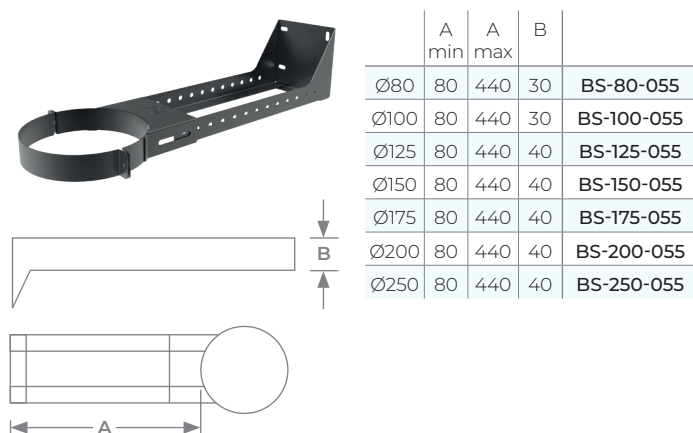
	A min	A max	
Ø80	100	210	BS-80-153
Ø100	100	210	BS-100-153
Ø125	100	210	BS-125-153
Ø150	100	210	BS-150-153
Ø175	100	210	BS-175-153
Ø200	100	210	BS-200-153
Ø250	100	210	BS-250-153



SUPPORTS

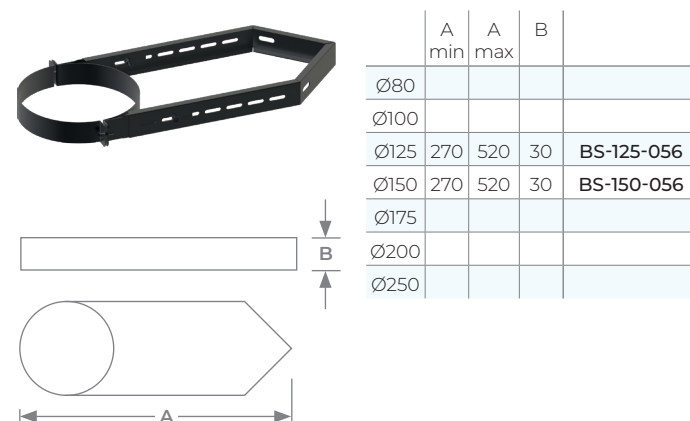
Wall band 210-420mm

Wall supports are to be used for lateral support only and should be used a minimum of every 3 metres. Only recommended fixings should be used to fit the wall support to the building surface. This wall band allows you to set a distance of 80mm (minimum) and 440mm (maximum) adjustment from the wall surface allowing a 360mm adjustment. This wall support has to be manually cut down to achieve the desired effective length.



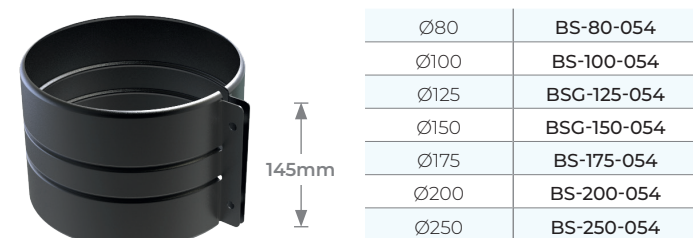
Corner wall support

Wall supports are to be used for lateral support only and should be used a minimum of every 3 metres. Only recommended fixings should be used to fit the wall support to the building surface. This wall band allows you to set a distance of 270mm (minimum) and 520mm (maximum) adjustment from the wall surface allowing a 250mm adjustment. This wall support has to be manually cut down to achieve the desired effective length.



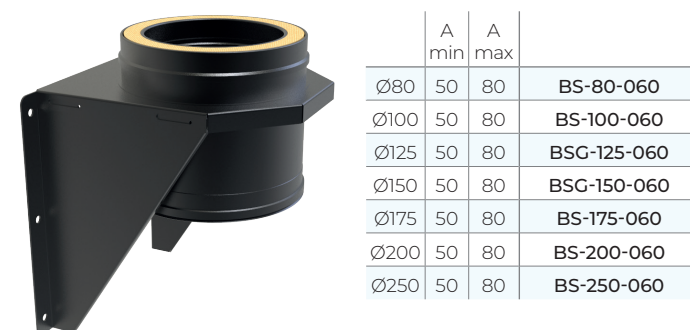
Structural locking band

The Structural Locking Band replaces the standard locking band where an unsupported length of up to 2.9 metres is required. These should be used on each joint above and the joint below the final wall support.



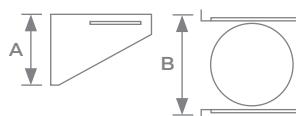
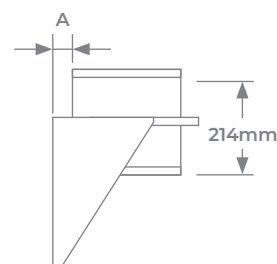
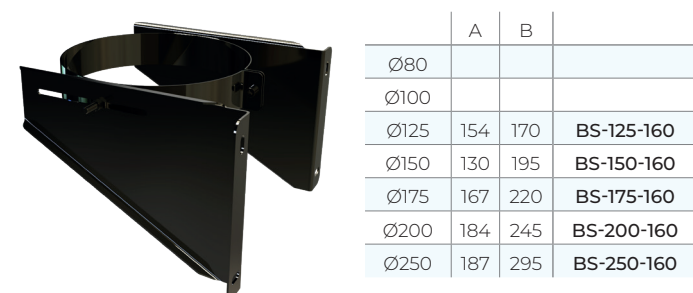
Adjustable base support

Adjustable base supports are used internally or externally to provide vertical support to the chimney. This support has a small levelling adjustment of 50mm to 80mm from the wall surface. Only recommended fixings should be used to fit this base support to the building surface.



Retro-fit base support

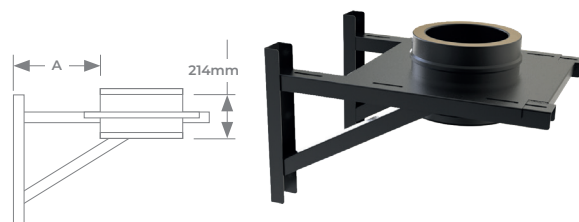
The retrofit base support is adjustable from 0mm to 120mm from the wall, it can be used in conjunction with 90° or 135° tees when fitted directly above. This item can also be used as a load bearing intermediate support on longer flue runs and can be retro fitted to make installation simpler. One support to be used on most standard single story or 2 storey homes, supporting up to 10m of chimney immediately above the tee. Only recommended fixings should be used.



Adjustable base support 80-280mm

Adjustable base supports are used internally or externally to provide vertical support to the chimney. This support has an adjustment of 80mm to 280mm from the wall surface. Only recommended fixings should be used to fit this base support to the building surface.

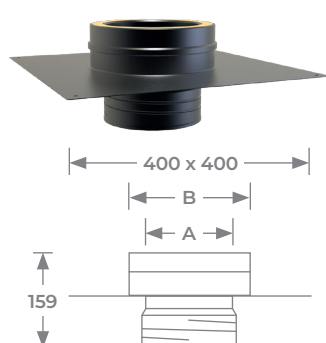
flex	A min	A max	
Ø80	80	280	BS-80-063
Ø100	80	280	BS-100-063
Ø125	80	280	BS-125-063
Ø150	80	280	BS-150-063
Ø175	80	280	BS-175-063
Ø200	80	280	BS-200-063
Ø250	80	280	BS-250-063



Chest mounting plate (screw fit adaptor)

Transitional plate that converts MI-Flex flue liner to TWPro, the component is designed to be fixed onto the top of a lowered chimney stack. Please note the transition from flex to TWPro must be made in side the existing class 1 chimney stack.

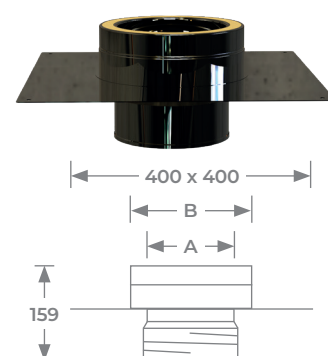
	A	B	
Ø80			
Ø100	100	150	BS-100-062
Ø125	125	175	BS-125-062
Ø150	150	200	BS-150-062
Ø175	175	225	BS-175-062
Ø200	200	250	BS-200-062
Ø250			



Chest mounting plate (push fit adaptor)

Transitional plate that converts Flexible flue liner to TWPro, the component is designed to be fixed onto the top of a lowered chimney stack. Please note the transition from flex to TWPro must be made in side the existing class 1 chimney stack.

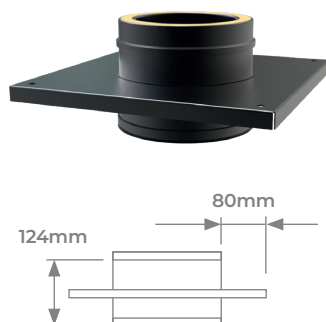
	A	B	
Ø80			
Ø100	100	150	BS-100-064
Ø125	125	175	BS-125-064
Ø150	150	200	BS-150-064
Ø175	175	225	BS-175-064
Ø200	200	250	BS-200-064
Ø250			



Console plate

Console Plates can be used as a load bearing support in conjunction with third party fixings.

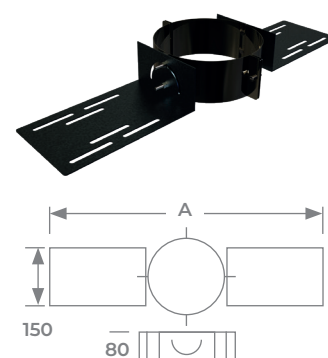
Ø80	BS-80-061
Ø100	BS-100-061
Ø125	BS-125-061
Ø150	BS-150-061
Ø175	BS-175-061
Ø200	BS-200-061
Ø250	BS-250-061



Heavy duty roof support

The heavy duty roof support will rotate on 2 screws so that the flue can be installed vertically through the roof. The roof support is attached to the rafters in the roof space, allowing a fixed support before the flue leaves the structure of the building. The larger plates offer more support than the standard -067 roof support. See loading data in guides.

	A	
Ø80	642	BS-80-167
Ø100	662	BS-100-167
Ø125	687	BS-125-167
Ø150	712	BS-150-167
Ø175	737	BS-175-167
Ø200	762	BS-200-167
Ø250	812	BS-250-167

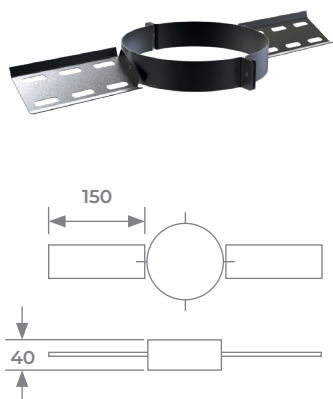


SUPPORTS

Roof support

The roof support will rotate on 2 screws so that the flue can be installed vertically through the roof. The roof support is attached to the rafters in the roof space, allowing a fixed support before the flue leaves the structure of the building. See loading data in guides.

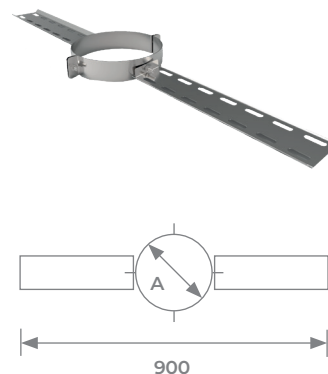
Ø80	BS-80-067
Ø100	BS-100-067
Ø125	BS-125-067
Ø150	BS-150-067
Ø175	BS-175-067
Ø200	BS-200-067
Ø250	BS-250-067



Long roof support

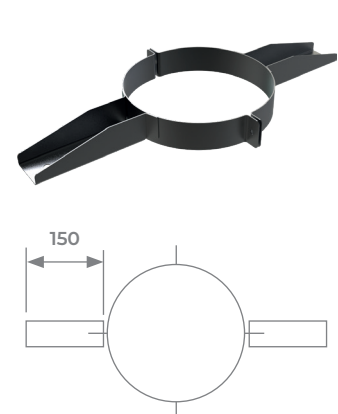
The roof support will rotate on 2 screws so that the flue can be installed vertically through the roof. The roof support is attached to the rafters in the roof space, allowing a fixed support before the flue leaves the structure of the building. See loading data in guides.

	A	
Ø80	130	BS-80-066
Ø100	150	BS-100-066
Ø125	175	BS-125-066
Ø150	200	BS-150-066
Ø175	225	BS-175-066
Ø200	250	BS-200-066
Ø250	300	BS-250-066



Joist support

Joist supports are used to support the chimney as it is passing through floor joists. The joist support is used in conjunction with fire stop plates and is fixed on the upper floor section spanning the floor joist allowing even weight distribution. See loading data in guides.

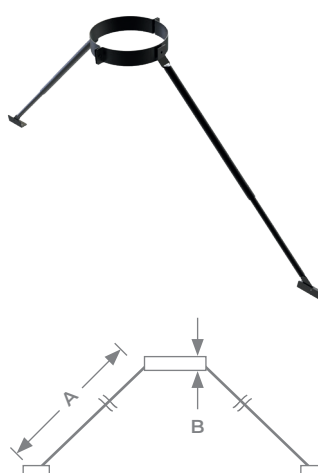


	A	
Ø80	30	BS-80-068
Ø100	30	BS-100-068
Ø125	40	BS-125-068
Ø150	40	BS-150-068
Ø175	40	BS-175-068
Ø200	40	BS-200-068
Ø250	40	BS-250-068



Roof brace kit

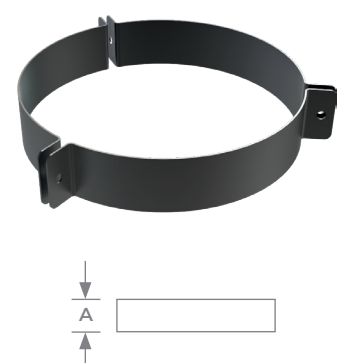
A roof brace kit can be used whenever there is a need to stabilise the chimney above the roof level. The roof brace kit must be used if the chimney extends 1.5 + metres above the roof. The arms can be adjusted from 1.25 metres to 2.3 metres in length.



	A min	A max	B	
Ø80				
Ø100				
Ø125	1250	2300	30	BS-125-123
Ø150	1250	2300	30	BS-150-123
Ø175				
Ø200				
Ø250				

Guy wire bracket

This component is used to secure unsupported chimney sections above 1.5m of the roof level, an extra 1.5m can be achieved in conjunction with the guy wire kit.



	A	
Ø80	30	BS-80-069
Ø100	30	BS-100-069
Ø125	30	BSG-125-069
Ø150	30	BSG-150-069
Ø175	40	BS-175-069
Ø200	40	BS-200-069
Ø250	40	BS-250-069

Guy wire kit

The Stove-Care Guy Wire Kit is the ideal solution to support a high or unsteady chimney. All parts made from rustproof galvanised steel, the kit contains enough parts to make THREE 10m long supporting wires. In most cases you will need a guy wire bracket to secure to the flue pipe.

92-GW30

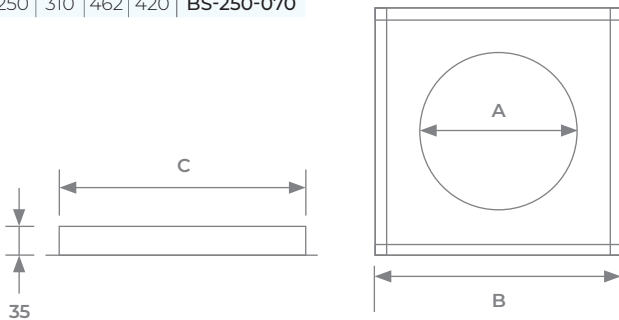
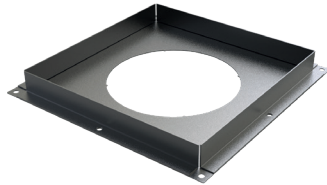


A Firestop plate is used to allow the chimney to pass between floors, for example, when you need the chimney to go through the ceiling on the ground floor through to the first floor. The steel plate is designed to provide the appropriate distance between the flue and the adjacent flammable materials, according to both fire and building regulations. A plate must be used top and bottom of the floor penetration.

Fire stop plate solid (T200 gas/oil)

A non-ventilated firestop plate (T200) can only be used on installations burning gas or oil. For solid fuel installations T600 ventilated plates must be used. All TWPro fire stops are set at a 50mm to combustible distance.

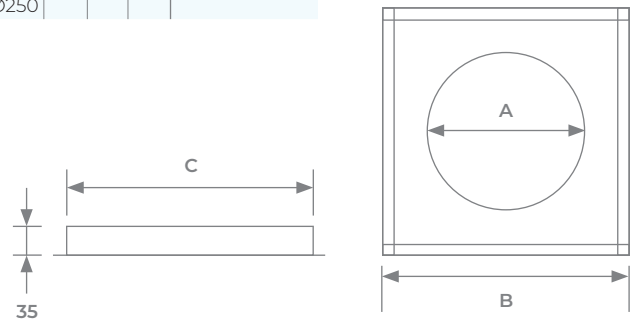
	A	B	C	
Ø80	140	292	252	BS-80-070
Ø100	160	312	272	BS-100-070
Ø125	185	337	297	BS-125-070
Ø150	210	362	322	BS-150-070
Ø175	235	387	347	BS-175-070
Ø200	260	412	372	BS-200-070
Ø250	310	462	420	BS-250-070



Fire stop plate ventilated (T600 all fuels)

A ventilated firestop plate (T600) can be used on installations burning all fuels. All TWPro fire stops are set at a 50mm to combustible distance.

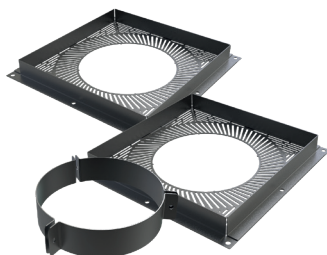
	A	B	C	
Ø80	140	292	252	BS-80-073
Ø100	160	312	272	BS-100-073
Ø125	185	337	297	BSG-125-073
Ø150	210	362	322	BSG-150-073
Ø175	235	387	347	BS-175-073
Ø200	260	412	372	BS-200-073
Ø250				



Ventilated firestop support kit

This kit comprises of 2 ventilated fire stops and a support clamp that can be used as a complete kit on a T600 all fuels firestop installation. Please note this installation allows 3 metres of vertical support.

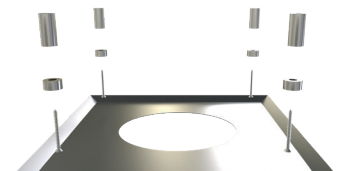
	A	B	C	
Ø80	140	292	252	BS-80-077
Ø100	160	312	272	BS-100-077
Ø125	185	337	297	BS-125-077
Ø150	210	362	322	BS-150-077
Ø175	235	387	347	BS-175-077
Ø200	260	412	372	BS-200-077
Ø250				



Fire stop cover plate

The firestop cover plate is used to cover an existing firestop plate. It gives the installation a pleasing finish, while still allowing enough air into the chamber without compromising the use of the firestop plate. It is attached to the underside of the firestop plate using magnets and spacers. It is important to use these spacers to allow the correct amount of air into the chamber.

Ø80	BS-80-075
Ø100	BS-100-075
Ø125	BS-125-075
Ø150	BS-150-075
Ø175	BS-175-075
Ø200	BS-200-075
Ø250	BS-250-075





Grisedale
136-GRISEDALÉ



Skiddaw
136-SKIDDAW



Loughrigg
136-LOUGHRIGG



Derwent
136-DERWENT



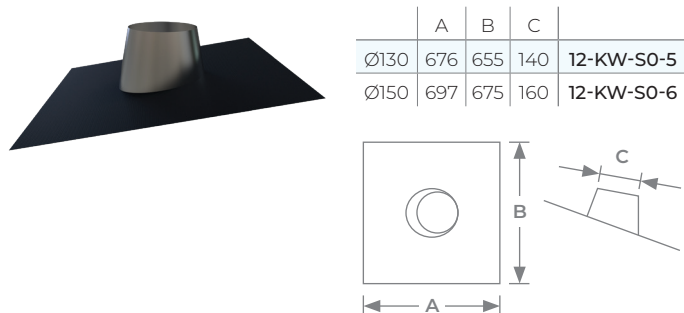
THE LAKES
stove range

Tel: 01843 842727

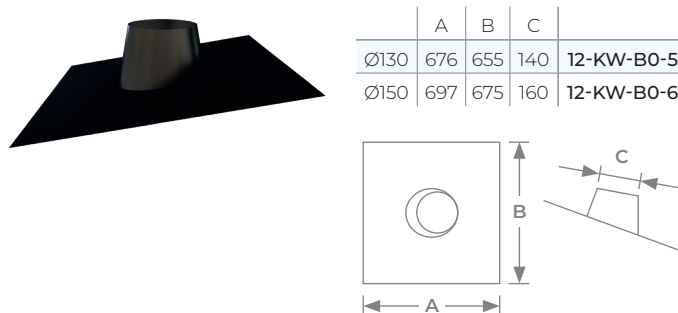
FLASHINGS

Fully lead free flashing with a Fast Flash adhesive base that is suitable for tiled or slate roofs. Fast Flash Flexible Roof Flashing is a polymer based flashing material with an aluminium mesh reinforcement. The lower surface, which has a butyl self-adhesive layer and is finished with a film to protect the flashing during storage and installation. Suitable for flues with external pipe diameters of 175mm and 200mm.

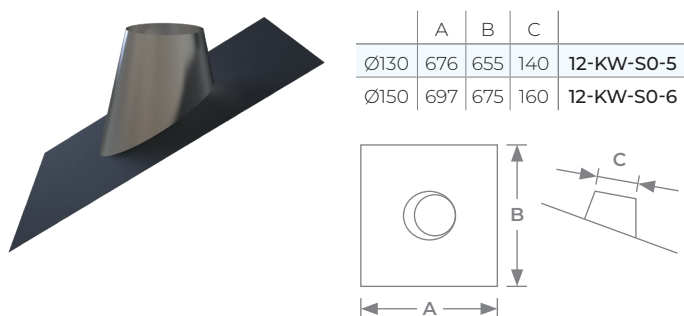
Lead free flashing 0°-20° stainless steel cone black base



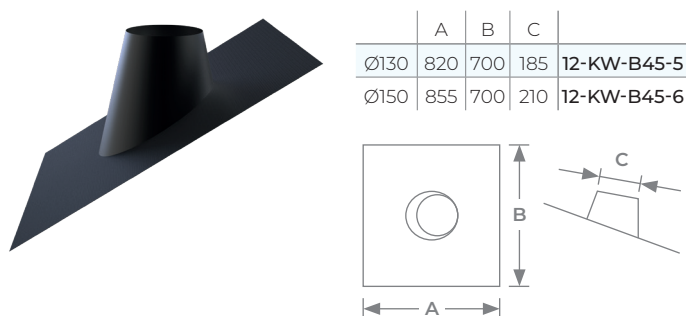
Lead free flashing 0°-20° black cone black base



Lead free flashing 20°-45° stainless steel cone black base



Lead free flashing 20°-45° black cone black base



Lead free flashing installation:

MI-Flash is easy to adapt to any project. The Fast Flash base is easy to tailor with a Stanley knife or plate shears.

The Fast Flash base is quick and easy to install. If necessary, Fast Flash can be pre-bent before installation.

The base adheres to all common building materials such as brick, concrete, metal, glass and many painted surfaces as well as certain types of plastic.

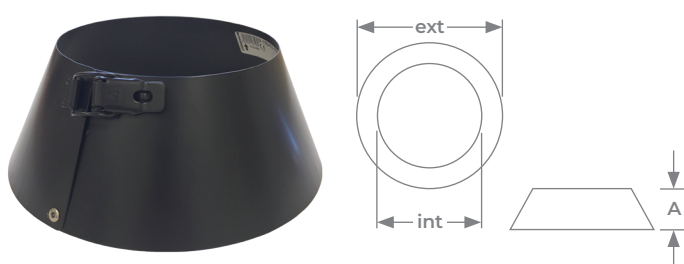
When attaching the base to porous surfaces such as brick and concrete, the surface must be pre-treated with Primer.

To clean surfaces of grease, oil and release agents use cleaning wipes. The surfaces should also be lightly matted. This is best done using an abrasive sponge.

To avoid Fast Flash sticking together when stacked or rolled during storage it is important to ensure that the protective film on the reverse is not removed.

Storm collar

Used to ensure water tightness in the passage through the roof. It also protects the flashing from extreme weather conditions. It should be installed about 25mm above the tallest part of the flashing. Once secure run a bead of silicone around the top edge and the flue to complete the water-tightness.

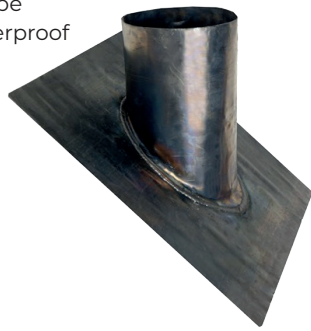


	ext	int	A	
Ø80	205	130	75	BS-80-082
Ø100	225	150	75	BS-100-082
Ø125	275	175	100	BSG-125-082
Ø150	300	200	100	BSG-150-082
Ø175	325	225	100	BS-175-082
Ø200	350	250	100	BS-200-082
Ø250	400	300	100	BS-250-082

Lead slate pitch 25°-35°

Lead slates are used wherever a pipe penetrates a roof, to form a weatherproof joint. Internal Ø 195mm.

Ø80	
Ø100	
Ø125	12-125-TWLS35
Ø150	12-150-TWLS35
Ø175	12-175-TWLS35
Ø200	12-200-TWLS35
Ø250	12-250-TWLS35



Lead slate pitch 36°-45°

Lead slates are used wherever a pipe penetrates a roof, to form a weatherproof joint.

Ø80	
Ø100	
Ø125	12-125-TWLS45
Ø150	12-150-TWLS45
Ø175	12-175-TWLS45
Ø200	12-200-TWLS45
Ø250	12-250-TWLS45



Ridge lead pitch 0-35°

For use where the flue terminates through the ridge tile.

Ø125	12-125-TWRID35
Ø150	12-150-TWRID35



Ridge lead pitch 35°-45°

For use where the flue terminates through the ridge tile.

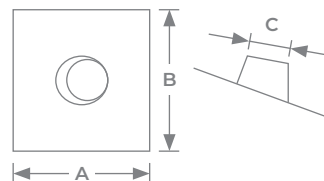
Ø125	12-125-TWRID45
Ø150	12-150-TWRID45



TILEFlash EPDM aluminium base

Suitable for tiled or slate roofs with a roof pitch of 20°- 45°. Accommodates external pipe diameters from 80 to 330mm. Suitable for low temperatures.

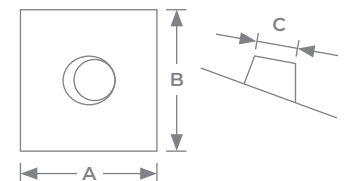
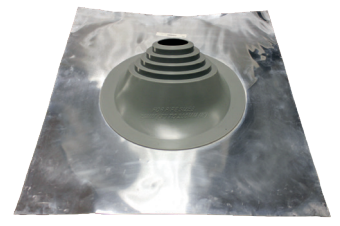
	A	B	C	
Ø80	605	605	80-200	12-1-TILE
Ø100	605	605	80-200	12-1-TILE
Ø125	705	501	125-225	12-15-TILE
Ø150	705	501	125-225	12-15-TILE
Ø175	760	660	175-275	12-2-TILE
Ø200	760	660	175-275	12-2-TILE
Ø250	760	660	175-275	12-2-TILE



TILEFlash silicone aluminium base

Suitable for tiled or slate roofs with a roof pitch of 20°- 45°. Accommodates external pipe diameters from 80 to 330mm. Suitable for high temperatures.

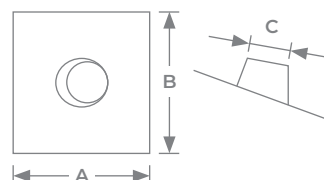
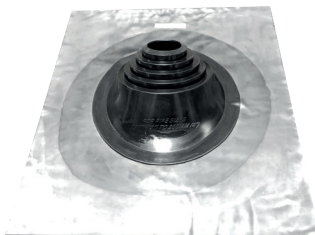
	A	B	C	
Ø80	605	605	80-200	12-1-TILEHT
Ø100	605	605	80-200	12-1-TILEHT
Ø125	705	501	125-225	12-15-TILEHT
Ø150	705	501	125-225	12-15-TILEHT
Ø175	760	660	175-275	12-2-TILEHT
Ø200	760	660	175-275	12-2-TILEHT
Ø250	760	660	175-275	12-2-TILEHT



TILEFlash EPDM lead base

Suitable for tiled or slate roofs with a roof pitch of 20°- 45°. Accommodates external pipe diameters from 80 to 330mm. Suitable for low temperatures.

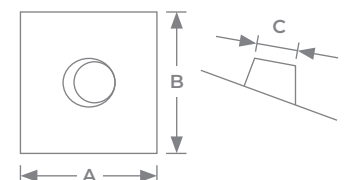
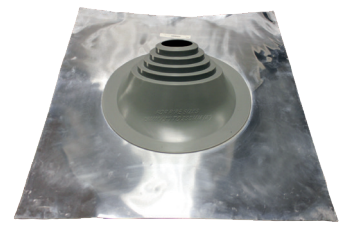
	A	B	C	
Ø80	605	605	80-200	12-1-LD-TILE
Ø100	605	605	80-200	12-1-LD-TILE
Ø125	705	501	125-225	12-15-LD-TILE
Ø150	705	501	125-225	12-15-LD-TILE
Ø175	760	660	175-275	12-2-LD-TILE
Ø200	760	660	175-275	12-2-LD-TILE
Ø250	760	660	175-275	12-2-LD-TILE



TILEFlash silicone lead base

Suitable for tiled or slate roofs with a roof pitch of 20°- 45°. Accommodates external pipe diameters from 125 to 225mm. Suitable for high temperatures.

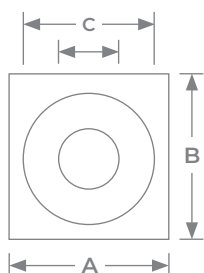
	A	B	C	
Ø80				
Ø100				
Ø125	705	501	125-225	12-15-LD-TILEHT
Ø150	705	501	125-225	12-15-LD-TILEHT
Ø175				
Ø200				
Ø250				



FLASHINGS

Metalfash EPDM

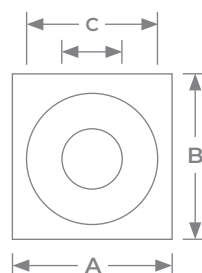
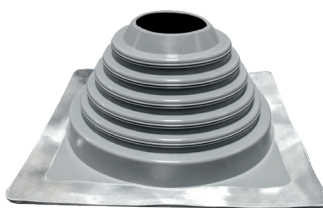
Black EPDM with aluminium skirt.



	A	B	C	
Ø80	280	280	101 - 178	12-5LT
Ø100	280	280	101 - 178	12-5LT
Ø125	304	304	127 - 230	12-6LT
Ø150	355	355	152 - 280	12-7LT
Ø175	355	355	152 - 280	12-7LT
Ø200	435	435	178 - 330	12-8LT
Ø250	435	435	178 - 330	12-8LT

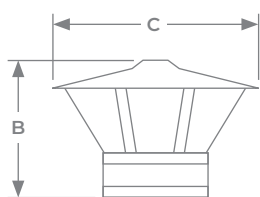
Metalfash silicone

Grey high temperature silicone with aluminium skirt.



	A	B	C	
Ø80	280	280	101 - 178	12-5HT
Ø100	280	280	101 - 178	12-5HT
Ø125	304	304	127 - 230	12-6HT
Ø150	355	355	152 - 280	12-7HT
Ø175	355	355	152 - 280	12-7HT
Ø200	435	435	178 - 330	12-8HT
Ø250	435	435	178 - 330	12-8HT

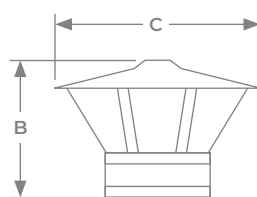
TERMINALS



Rain cap

Standard rain protection terminal designed to minimise water ingress directly into the flue outlet.

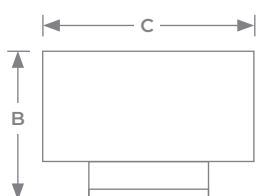
	B	C	
Ø80	219	240	BS-80-090
Ø100	244	300	BS-100-090
Ø125	276	350	BS-125-090
Ø150	299	400	BS-150-090
Ø175	361	450	BS-175-090
Ø200	345	500	BS-200-090
Ø250	384	580	BS-250-090



Rain cap with mesh

Standard rain cap terminal with added 25mm square wire mesh to stop birds or vermin entering and blocking the flue way. Suitable for all fuel except gas.

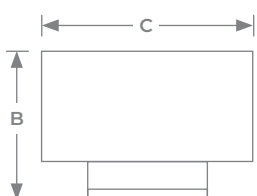
	B	C	
Ø80	219	240	
Ø100	244	300	BS-100-112
Ø125	276	350	BSG-125-112
Ø150	299	400	BSG-150-112
Ø175	361	450	BS-175-112
Ø200	345	500	BS-200-112
Ø250	384	580	



Gas cowl

Gas cowls are to be use on gas appliances only, the product is not suitable for solid fuel appliances.

	B	C	
Ø80	244	250	BS-80-092
Ø100	262	300	BS-100-092
Ø125	259	325	BS-125-092
Ø150	267	350	BS-150-092
Ø175	280	375	BS-175-092
Ø200	290	430	BS-200-092
Ø250	305	480	BS-250-092



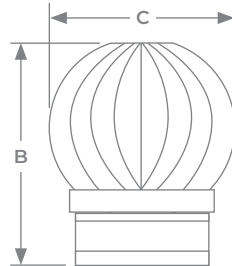
Anti-wind cowl

The Anti-wind terminal has a rain cap at its core with an outer cover to give ultimate rain and wind protection.

	B	C	
Ø80	225	250	BS-80-091
Ø100	235	300	BS-100-091
Ø125	245	325	BSG-125-091
Ø150	250	350	BSG-150-091
Ø175	265	375	BS-175-091
Ø200	275	430	BS-200-091
Ø250	285	480	BS-250-091

Rotating cowl

Rotating cowls are one method of helping with the effects of down draft in the chimney system. The terminal has a rotating cover that will spin around in the wind equalizing the outlet velocity.

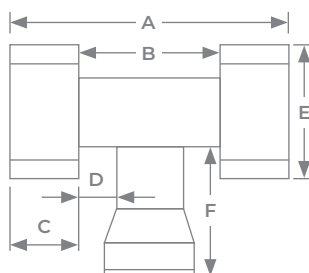


	B	C	
Ø80	400	270	BS-80-094
Ø100	400	270	BS-100-094
Ø125	400	270	BS-125-094
Ø150	400	270	BS-150-094
Ø175	400	270	BS-175-094
Ø200	400	270	BS-200-094
Ø250	480	380	BS-250-094

H-cowl

The H-cowl is a static anti-down draft terminal that has no moving parts and is perfect for high wind areas. The terminal offers extremely good protection from water ingress.

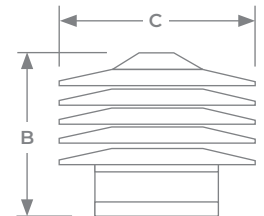
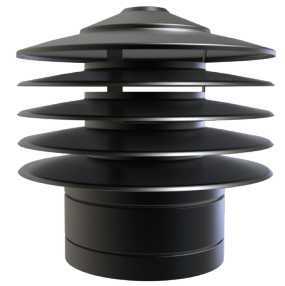
	A	B	C	D	E	F	
Ø80							
Ø100							
Ø125	500	245	127	59	280	295	BS-125-103
Ø150	625	320	152	85	300	295	BS-150-103
Ø175							
Ø200							
Ø250							



Anti-downdraught cowl

The TWPro Static anti-down draft terminal is the perfect solution for chimneys facing downdraught issues. The terminal has been specifically designed to integrate with TWPro to give a more appealing termination to the chimney. Made from 316 s/s this terminal is suitable for all fuels.

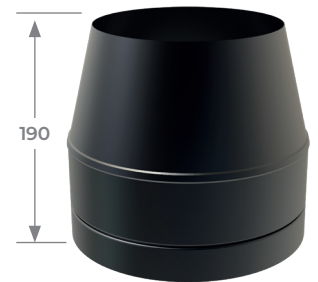
	B	C	
Ø80			
Ø100			
Ø125	315	295	BS-125-105
Ø150	315	295	BS-150-105
Ø175			
Ø200			
Ø250			



Cone top cowl

Cone top/open terminals offer the least resistance of all the family of terminals, the open construction allows the maximum exit velocity of the flue gas. Please note only use on systems where a Tee cap and drain is installed to allow any water in the system to drain away.

Ø80	BS-80-093
Ø100	BS-100-093
Ø125	BS-125-093
Ø150	BS-150-093
Ø175	BS-175-093
Ø200	BS-200-093
Ø250	BS-250-093

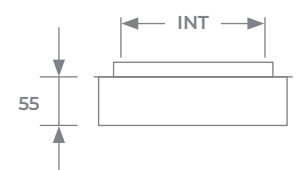


Insulation cover plate

Used to cover the final section of TWpro to the elements when a third party terminal is being used.

Please note we take no responsibility for the fixing of the third party terminal to the TWPro system Chimney.

	int	
Ø80		
Ø100		
Ø125	125	BS-125-104
Ø150	150	BS-150-104
Ø175	175	BS-175-104
Ø200	200	BS-200-104
Ø250	250	BS-250-104



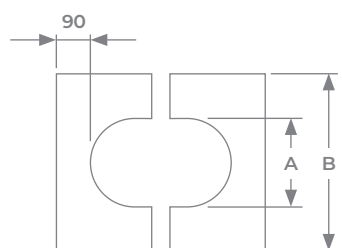
FINISHING PLATES

2 piece square finishing plate 0°- 30°

The square finishing plate comes in two parts and is used to tidy the area around the flue as it passes through a non-combustible wall. This plate is attached to the wall where the flue is passing through between 90° and 60°. Use silicone and screws to secure against the wall.

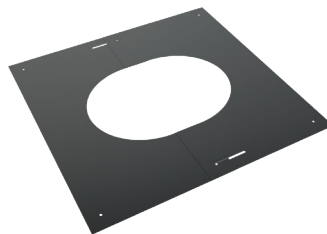


	A	B	
Ø80	135	315	BS-80-096
Ø100	155	335	BS-100-096
Ø125	180	365	BSG-125-096
Ø150	205	390	BSG-150-096
Ø175	230	415	BS-175-096
Ø200	255	440	BS-200-096
Ø250	305	490	BS-250-096

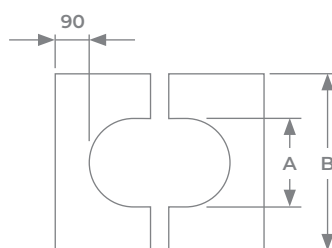


2 piece square finishing plate 30°- 45°

The square finishing plate comes in two parts and is used to tidy the area around the flue as it passes through a non-combustible wall. This plate is attached to the wall where the flue is passing through between 45° and 60°. Use silicone and screws to secure against the wall.



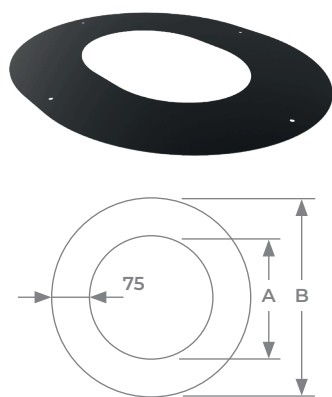
	A	B	
Ø80	135	315	BS-80-097
Ø100	155	335	BS-100-097
Ø125	180	365	BSG-125-097
Ø150	205	390	BSG-150-097
Ø175	230	415	BS-175-097
Ø200	255	440	BS-200-097
Ø250	305	490	BS-250-097



1 piece round finishing plate 90° - 75mm wide

The round finishing plate comes in one complete part and is used to tidy the area around the flue as it passes through a wall. This plate is attached to the wall where the flue is passing through at 90°. Use silicone and screws to secure against the wall. 75mm wide.

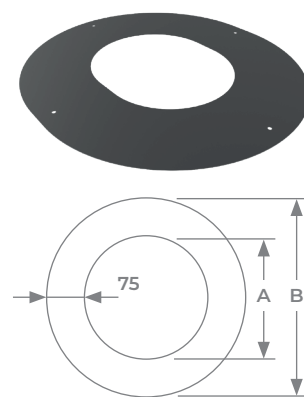
	A	B	
Ø80			
Ø100			
Ø125	289	337	BSG-125-113
Ø150	309	365	BSG-150-113
Ø175	335	400	BS-175-113
Ø200	360	437	BS-200-113
Ø250			



1 piece round finishing plate 45° - 75mm wide

The round finishing plate comes in one complete part and is used to tidy the area around the flue as it passes through a wall. This plate is attached to the wall where the flue is passing through at 45°. Use silicone and screws to secure against the wall. 75mm wide.

	A	B	
Ø80			
Ø100			
Ø125	140	290	BSG-125-114
Ø150	160	310	BSG-150-114
Ø175	185	335	BS-175-114
Ø200	210	360	BS-200-114
Ø250			



TINDERBOX

Tel: 01843 842727

Small
137-S-TINDERBOX



Medium
137-M-TINDERBOX



Large
137-L-TINDERBOX



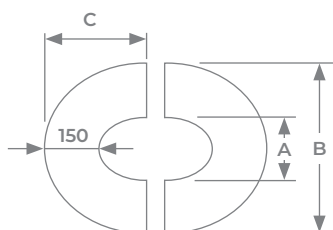
Tall
137-T-TINDERBOX

FINISHING PLATES

2 piece round fixed finishing plate 45° - 150mm wide

The round finishing plate comes in two parts and is used to tidy the area around the flue as it passes through a non-combustible wall. This plate is attached to the wall where the flue is passing through at fixed 45°. Use silicone and screws to secure against the wall. 150mm wide.

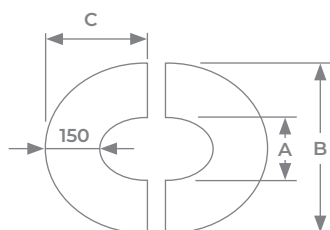
	A	B	C	
Ø80				
Ø100	155	453	268	BS-100-116
Ø125	180	478	286	BS-125-116
Ø150	205	503	304	BS-150-116
Ø175	230	528	339	BS-175-116
Ø200	255	553	339	BS-200-116
Ø250				



2 piece round fixed finishing plate 90° - 150mm wide

The round finishing plate comes in two parts and is used to tidy the area around the flue as it passes through a non-combustible wall. This plate is attached to the wall where the flue is passing through at fixed 90°. Use silicone and screws to secure against the wall. 150mm wide.

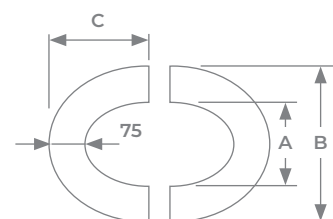
	A	B	C	
Ø80				
Ø100	155	453	237	BS-100-118
Ø125	180	478	249	BS-125-118
Ø150	205	503	262	BS-150-118
Ø175	230	528	274	BS-175-118
Ø200	255	553	287	BS-200-118
Ø250				



2 piece round fixed finishing plate 45° - 75mm wide

The round finishing plate comes in two parts and is used to tidy the area around the flue as it passes through a non-combustible wall. This plate is attached to the wall where the flue is passing through at fixed 45°. Use silicone and screws to secure against the wall. 75mm wide.

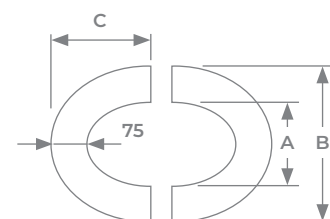
	A	B	C	
Ø80				
Ø100	155	303	193	BS-100-115
Ø125	180	328	211	BS-125-115
Ø150	205	353	229	BS-150-115
Ø175	230	378	246	BS-175-115
Ø200	255	403	264	BS-200-115
Ø250				



2 piece round fixed finishing plate 90° - 75mm wide

The round finishing plate comes in two parts and is used to tidy the area around the flue as it passes through a non-combustible wall. This plate is attached to the wall where the flue is passing through at fixed 90°. Use silicone and screws to secure against the wall. 75mm wide.

	A	B	C	
Ø80				
Ø100	155	303	162	BS-100-117
Ø125	180	328	174	BS-125-117
Ø150	205	353	187	BS-150-117
Ø175	230	378	199	BS-175-117
Ø200	255	403	212	BS-200-117
Ø250				



LOW 144-OVALE-L

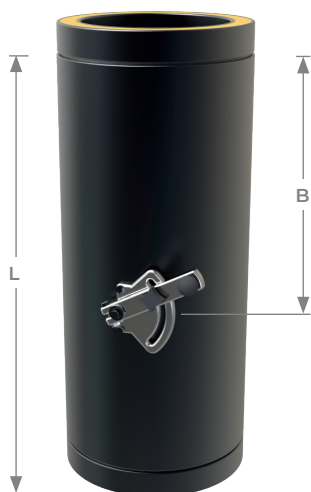
Low with Door 144-OVALE-LD

Tall 144-OVALE-T

Tall on Pedestal 144-OVALE-P

Tel: 01843 842727

ACCESSORIES



Damper section

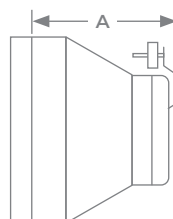
Flue Damper helps to regulate draught within the chimney. The Flue Damper is encased in a Pipe Length. It is not essential unless you have problems controlling your stove.

Dia	Effective length (L)		
	L	B	
Ø80	215	120	BS-80-006
Ø100	215	120	BS-100-006
Ø125	465	244	BS-125-006
Ø150	465	244	BS-150-006
Ø175	465	244	BS-175-006
Ø200	465	244	BS-200-006
Ø250	465	244	BS-250-006



Draught Stabilizer

Draught stabilisers helps to regulate and stabilise draught within the chimney. The flue stabiliser should be installed in the branch of a 90° Tee in the same room as the combustion appliance.

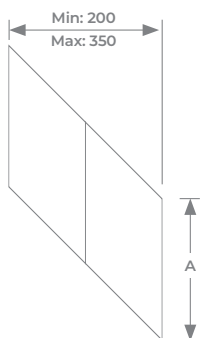


	A	
Ø80		
Ø100	188	BS-100-007
Ø125	188	BS-125-007
Ø150	188	BS-150-007
Ø175	188	BS-175-007
Ø200	213	BS-200-007
Ø250	115	BS-250-007

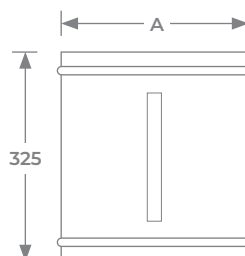


Wall sleeve 45° adjustable

The adjustable wall sleeve is used to protect the chimney in the wall passage when the flue system passes to the outside wall. The gap between the flue and the wall sleeve can be filled with rockwool. This Wall Sleeve is precut at 45° and is adjustable (min 200mm - max 350mm) so it can be manually extended within wall.



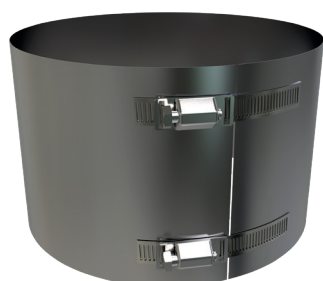
	A	
Ø80	100	BS-80-100
Ø100	125	BS-100-100
Ø125	150	BS-125-100
Ø150	175	BS-150-100
Ø175	200	BS-175-100
Ø200	250	BS-200-100
Ø250	325	BS-250-100



Wall sleeve

The wall sleeve is used to protect the chimney in the wall passage when the flue system passes to the outside wall. The gap between the flue and the wall sleeve can be filled with rockwool. If going through the wall at 45°, you will have to taper-cut the sleeve so that it fits flush in the wall. It can be cut using a grinder or a hacksaw.

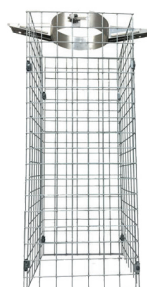
	A	
Ø80	150	BS-80-098
Ø100	175	BS-100-098
Ø125	200	BS-125-098
Ø150	225	BS-150-098
Ø175	250	BS-175-098
Ø200	300	BS-200-098
Ø250	350	BS-250-098



Joint cover band

Decorative cover band that can be used internally in place of a locking band when the chimney is on show.

Ø125	BS-125-175
Ø150	BS-150-175



Loft mesh kit

For use when your flue passes through a loft space.

Ø80	
Ø100	
Ø125	13-MESHKIT-125
Ø150	13-MESHKIT-150
Ø175	13-MESHKIT-175
Ø200	13-MESHKIT-200
Ø250	



Gasket / seal



The gasket seal is required where the chimney is being used on a condensing appliance.

Ø80	15-80-102	Ø175	15-175-102
Ø100	15-100-102	Ø200	15-200-102
Ø125	15-125-102	Ø250	15-250-102
Ø150	15-150-102		

Vertical Load Supports

Product	Øint	[In metres of pipe]	
		Load above	Load below
	080	12	3
	100	12	3
	125	12	3
	150	12	3
	175	12	3
	200	12	3
	250	12	3
	300	12	3
	080	12	3
	100	12	3
	125	12	3
	150	12	3
	175	9	3
	200	9	3
	250	6	3
	300	6	3
	080	12	3
	100	12	3
	125	12	3
	150	12	3
	175	12	3
	200	12	3
	250	12	3
	300	12	3
	-	4	-
	-	4	-
	-	4	-
	-	4	-
	-	4	-
	-	4	-
	-	4	-
	-	4	-
	-	4	-
	-	2	-
	-	2	-
	-	2	-
	-	2	-
	-	2	-
	-	2	-
	-	2	-
	-	2	-

Lateral Supports

Product	Øext	[Metres]
		Distance
	130	3
	150	3
	175	3
	200	3
	225	3
	250	3
	300	3
	350	3
	130	3
	150	3
	175	3
	200	3
	225	3
	250	3
	300	3
	350	3
	130	3
	150	3
	175	3
	200	3
	225	3
	250	3
	300	3
	350	3
	130	3
	150	3
	175	3
	200	3
	225	3
	250	3
	300	3
	350	3

TWVPro

TWIN WALL INSULATED CHIMNEY **|||**



Sales: **01843 842727**

www.snh.co.uk E-mail: sales@snhuk.co.uk